



# October 2008 Grid Operations

ERCOT Board of Directors  
December 9, 2008

**Kent Saathoff**

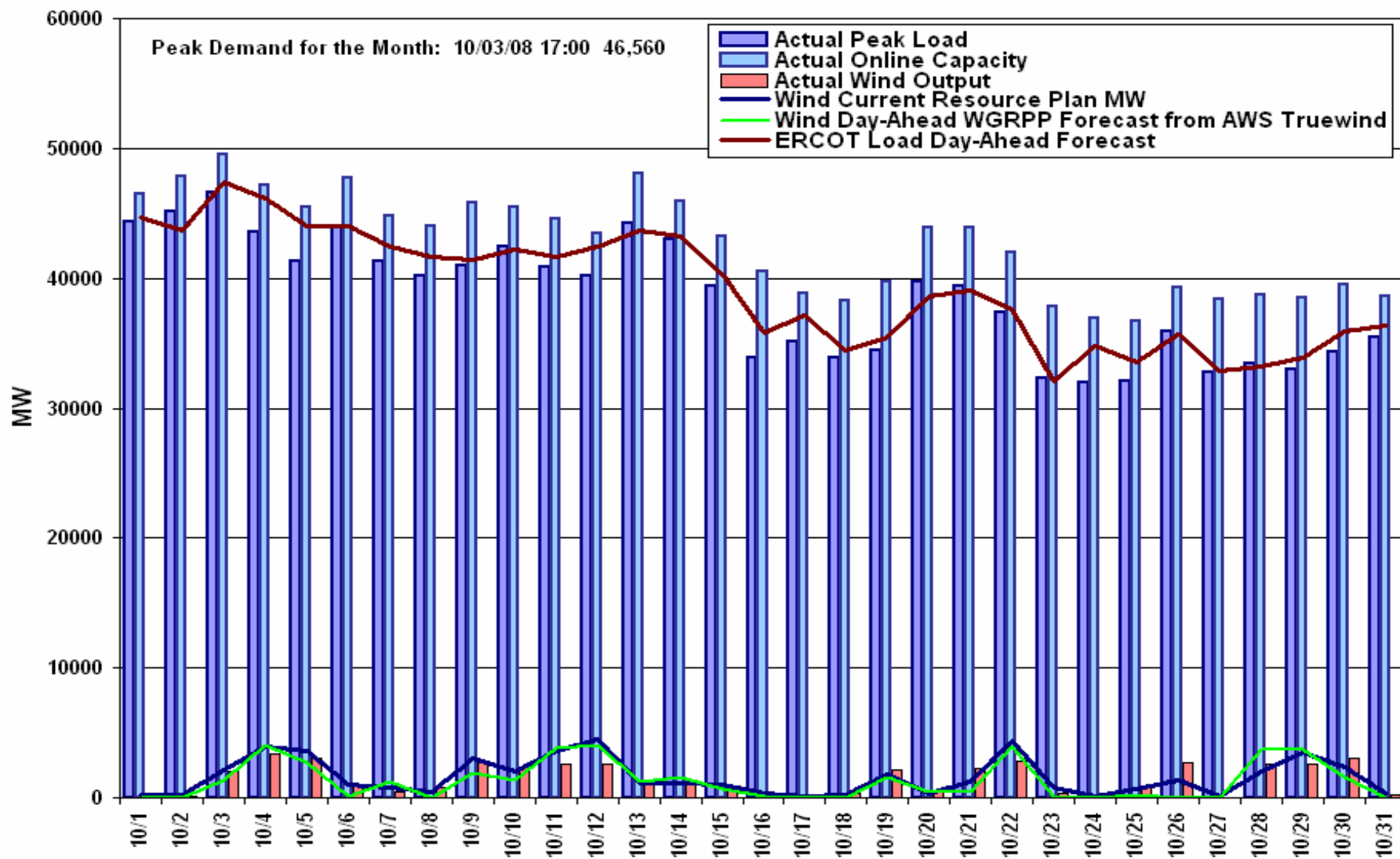
**Vice President, System Planning  
and Operations**

- **Summary**
- **Peak Demand: Actual vs. Forecast**  
**On-line Resources: Total at Peak and Wind**
- **Day-Ahead Load Forecast Performance**
- **Out of Merit Capacity Order (OOMC) &  
Reliability Must Run (RMR) Purchases**
- **Zonal Congestion**
- **Significant System Incidents**
- **Advisories, Alerts and EECs**
- **Other Items**

- **The peak demand of 46,564 MW on October 3<sup>rd</sup> was less than the forecast of 47,341 MW for October.**
- **Day-ahead load forecast error for October was 2.79%. Great improvement from previous two months due to more stable weather patterns**
- **Increased local congestion in Rio Grande Valley due to maintenance outages**
- **Increased Zonal congestion North–Houston due to generation maintenance outage, West-North increased wind generation and maintenance outages**
- **No Alert for ARR below 2500 MW, EECP or Transmission Emergency events**

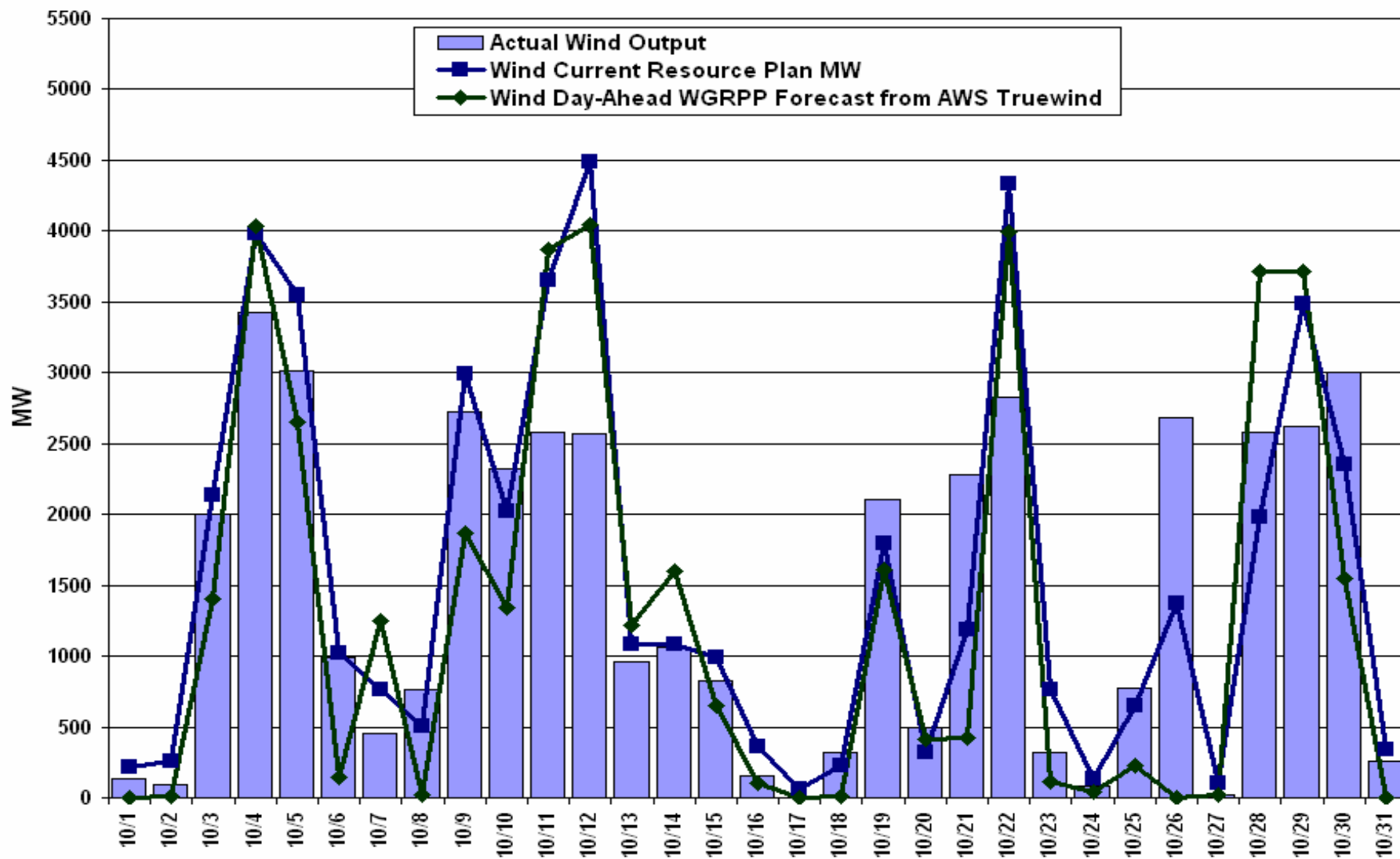
# Daily Peak Demand: Hourly Average Actual vs Forecast

## Resource Plan: On-line Capacity at Peak

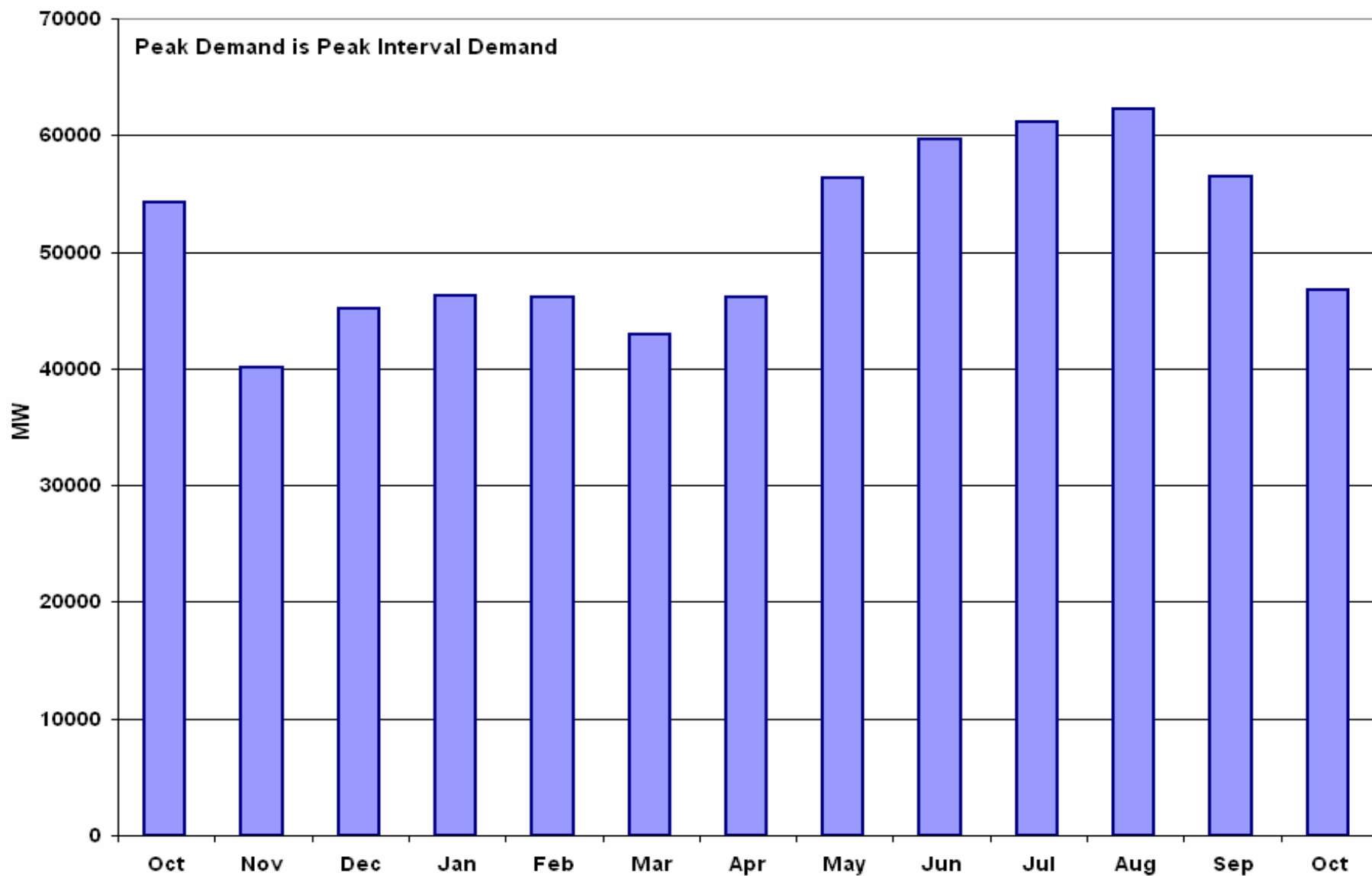


Note: All data are hourly averages during the peak load hour obtained from Resource Plans, EMMS, and AWS Truewind Wind Forecast.

# Actual Wind Output Vs Wind Current Resource Plan & Wind Day-Ahead AWS Forecast at Peak Load



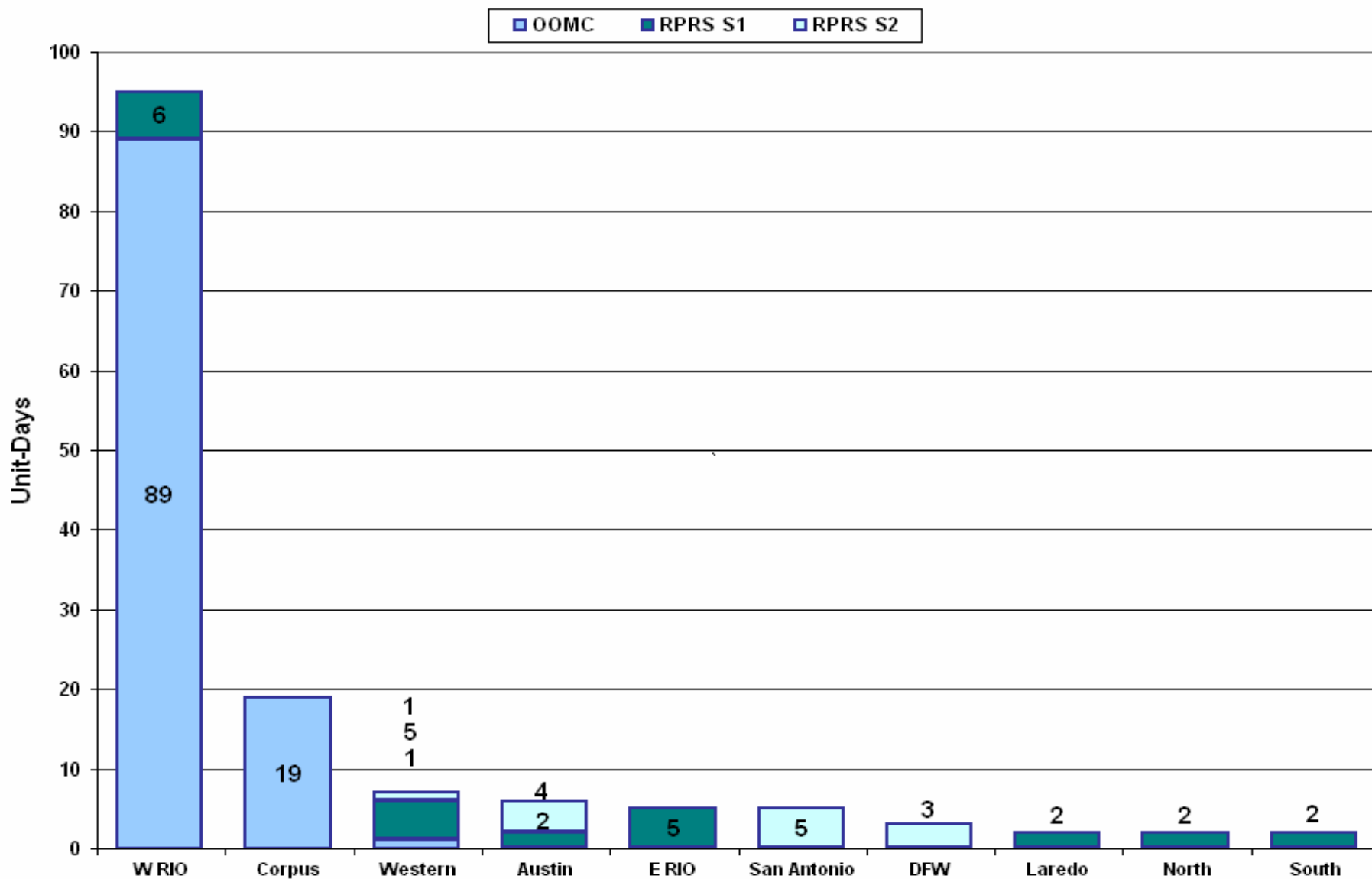
# Monthly Peak Demand: Actual



# Day-Ahead Load Forecast Performance in October 2008

	Mean Absolute Percent Error (MAPE) for ERCOT Mid-Term Load Forecast (MTLF) Run at 16:00 Day Ahead				
	2005 MAPE	2006 MAPE	2007 MAPE	2008 MAPE (YTD)	October 2008 MAPE
Average Annual MAPE	4.56	3.79	3.55	3.24	2.79

# Capacity Purchases of RMR, OOMC & RPRS to Manage Local Congestion in October 2008





# Zonal Congestion

<b>CSC</b>	<b>Oct 07 Days</b>	<b>Aug 08 Days</b>	<b>Sept 08 Days</b>	<b>October 08 Days</b>	<b>Last 12 Months Total Days</b>
<b>North – Houston</b>	7	1	6	<b>15</b> Oct – 2-7,9,11-16,21,26	90
<b>North – West</b>	2	1	1	<b>0</b>	47
<b>West – North</b>	6	2	0	<b>13</b> Oct – 9,10,12,19,20-22,26-31	166
<b>South – North</b>	0	0	1	<b>0</b>	37
<b>North - South</b>	N/A	3	7	<b>0</b>	110

- **October 26<sup>th</sup>**

- 12:20 - Alert issued due to the real-time balancing market failed. Held IE 12:15 and resumed with IE 13:15.
- 13:50 - Emergency Notice issued due to Day-Ahead Ancillary Service Market did not meet time-line.

EMMS Production Servers related to RTB were inadvertently patched and rebooted causing the SFT, RPRS, and PI Servers to fail. Procedures and patching process has been revised.

- **Advisories issued for Adjusted Responsive Reserve (ARR) below 3000 MW.**
  - Issued 5 Days.
- **No alerts issued for ARR below 2500 MW in October 2008.**
- **Transmission Emergency (operation above single contingency limits):**
  - None
- **No EECs in October 2008**

- **October 13<sup>th</sup>**
  - Held interval ending 18:30 balancing energy deployments due to input error in offset calculation.

Questions ?