



EILS Update

DSWG

November 7, 2008

- **PRR 781 & NPRR 158 EILS Self-Provision Formula Correction**
- **Procurement Schedule for Feb.-May 2009 Contract Period**
- **EILS Trend lines**

- **EILS Self-Provision Formula Correction**
 - Zonal PRR with Nodal NPRR Companion
- **Introduced by ERCOT Settlements Staff on Sept. 23**
- **Corrects EILS Self-Provision Settlement equations to make them consistent with the verbal description of and the author's original intent**
 - Clarifies that uplifted EILS costs are based on final adjusted EILS obligations after accounting for any self-provided EILS, and adjusts other related formula terms
 - Makes other minor clarifications to the Self-Provision settlement language
- **Also clarifies language related to QSEs' Self-Provision options in cases where less than 1,000 MW of EILS has been offered**

- **PRR 781**
 - Approved unanimously by PRS on Oct. 23
 - Returns to PRS Nov. 20 for impact analysis
 - On track for December TAC and January Board
 - If approved, will be effective Feb. 1, 2009, in time for next EILS procurement cycle
- **NOTE: No EILS Self-Provision to date**

- **NPRR 158**
 - Pending at TPTF

Feb.-May 2009 Contract Period:

Date	Action
Dec. 1	RFP Issued
Dec. 12	EILS Resource ID forms due at ERCOT*
Dec. 19	ERCOT issues baseline assignments & capacity pre-screening info to QSEs
Jan. 9	Bids and Self-Provision offers due
Jan. 16	ERCOT notifies QSEs of bid awards
Jan. 29	Standard Form Agreements due back at ERCOT
Feb. 1	Start of Contract Period

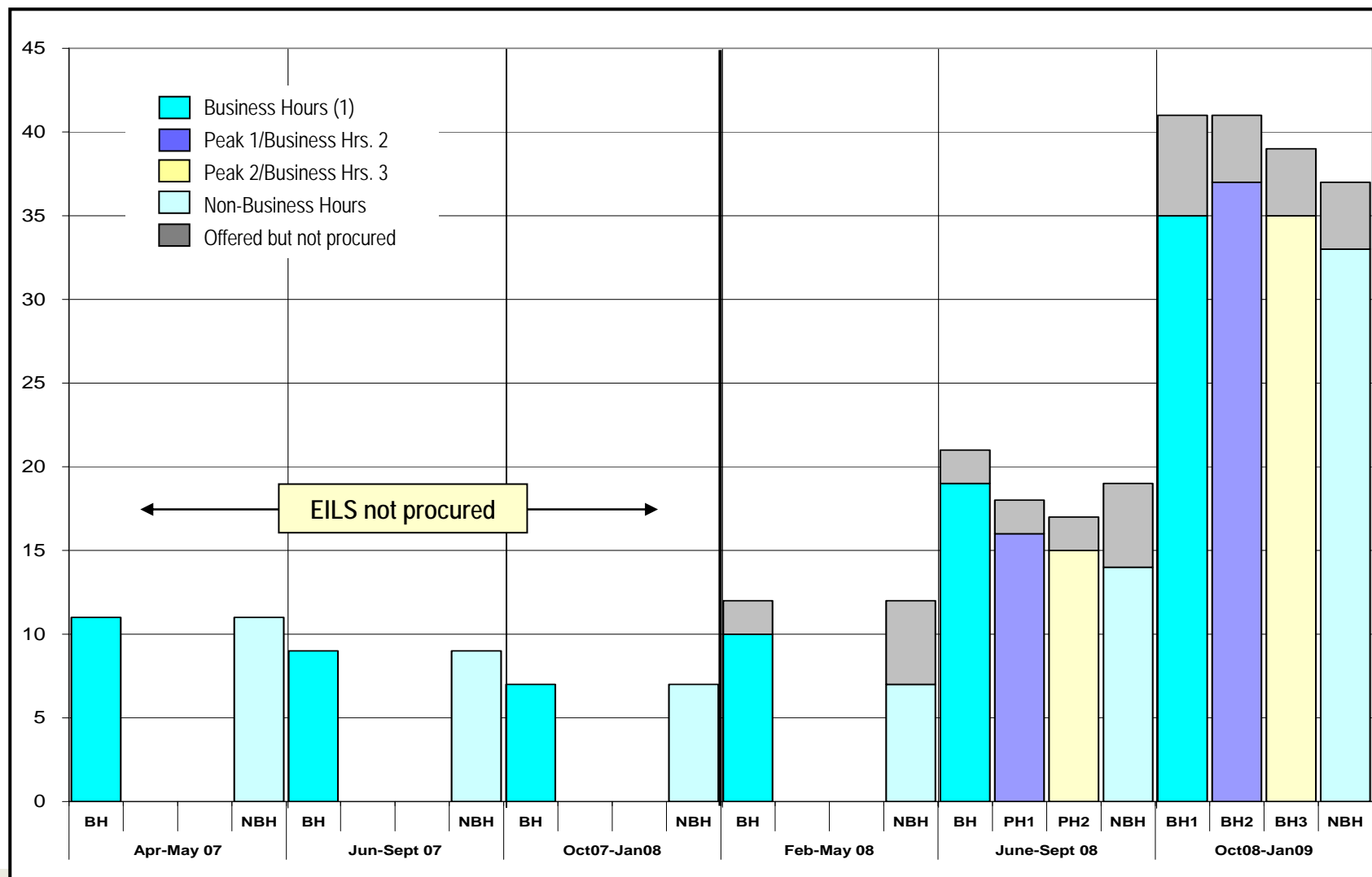
* Submitting ESI IDs to ERCOT does not bind the QSE or Load to bid into EILS

- Oct. '08 - Jan. '09 Contract Period**

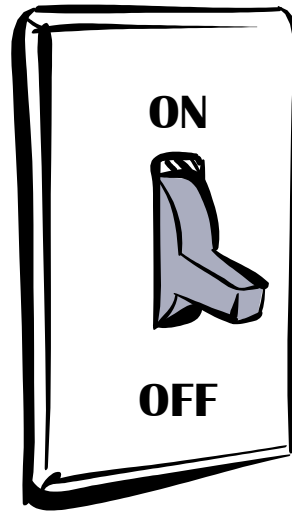
Time Period	Business Hours 1	Business Hours 2	Business Hours 3	Non-Business Hours
Definition	8 AM to 1 PM Mon-Fri except Holidays	1 PM to 4 PM Mon-Fri except Holidays	4PM to 8 PM Mon-Fri except Holidays	All other hours
EILS Procured	272 MW	289 MW	291 MW	273 MW
# of EILS Resources	35 (includes 25 aggregations)	37 (includes 25 aggregations)	35 (includes 23 aggregations)	33 (includes 21 aggregations)
Avg. Cost per MW per Hour	\$10.83	\$11.28	\$11.39	\$9.61

- Total projected cost for this Contract Period: \$8.2 million**
- Total projected cost for the 2008 EILS program year: \$20.1 million**

- No. of EILS Resources bidding by Contract Period**



- Questions?



EILS Web Page:

<http://www.ercot.com/services/programs/load/eils/index.html>