



August 2008 Grid Operations

ERCOT Board of Directors
21 October 2008

Kent Saathoff

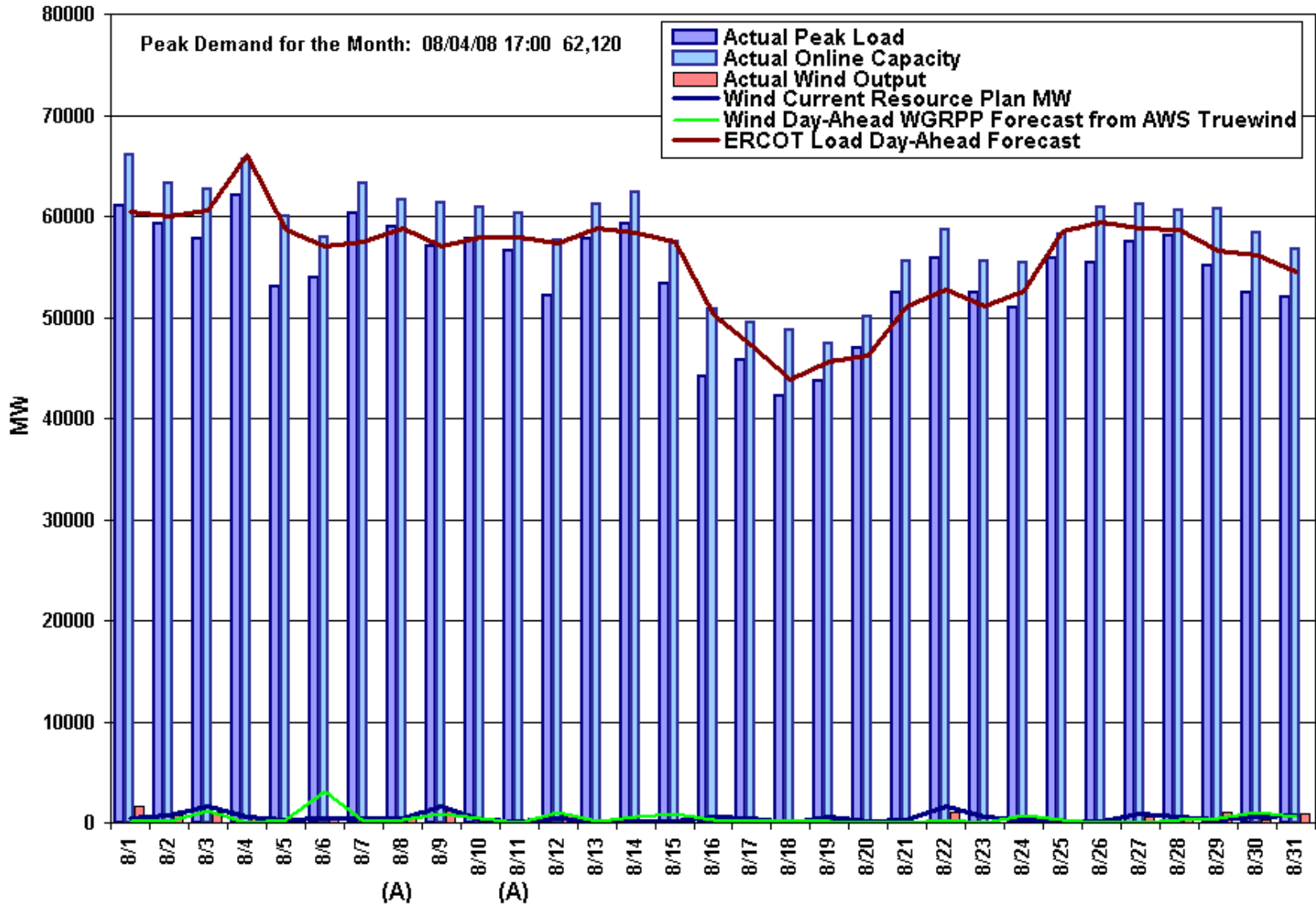
Vice President – System Operations

- **Summary**
- **Peak Demand: Actual vs. Forecast**
On-line Resources: Total at Peak and Wind
- **Day-Ahead Load Forecast Performance**
- **Out of Merit Capacity Order (OOMC) &**
Reliability Must Run (RMR) Purchases
- **Zonal Congestion**
- **Significant System Incidents**
- **Advisories, Alerts and EECs**
- **Other Items**

- **The peak demand of 62,120 MW on August 4 was below the all-time actual peak of 62,339 MW in August 2006 and the forecast 2008 peak of 63,702 MW**
- **Day-ahead load forecast error for August was 3.65%. This relatively high error was due to forecast temperature error at peak caused by tropical and other storms**
- **Wind forecast also higher error due to weather forecast issues**
- **Zonal congestion reduced from previous months, probably resulting from Board actions in June**
- **No EECF events**
- **Termination agreements for all three RMR units were reached effective September 30, 2008**

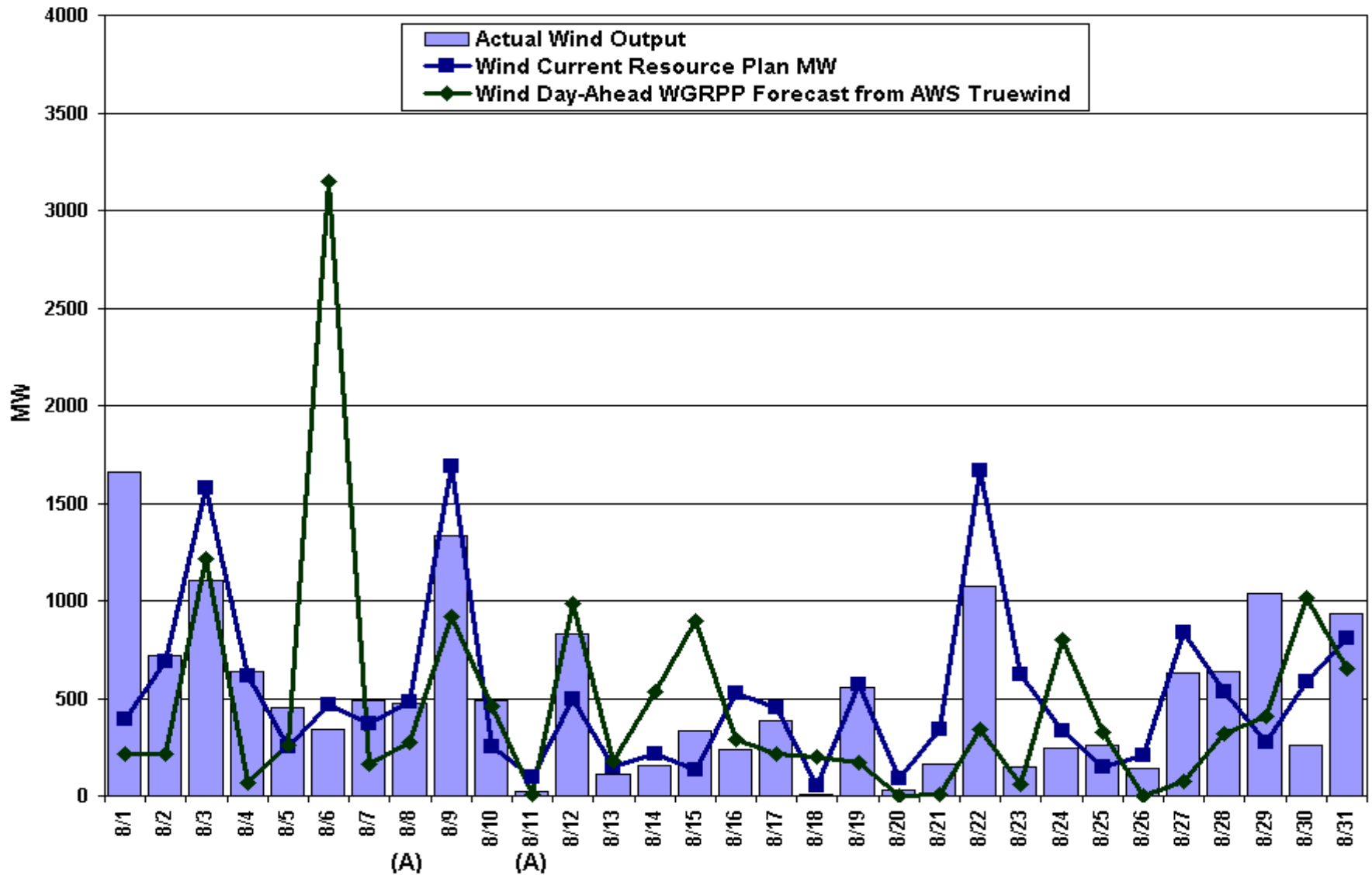
Daily Peak Demand: Hourly Average Actual vs Forecast

Resource Plan: On-line Capacity at Peak

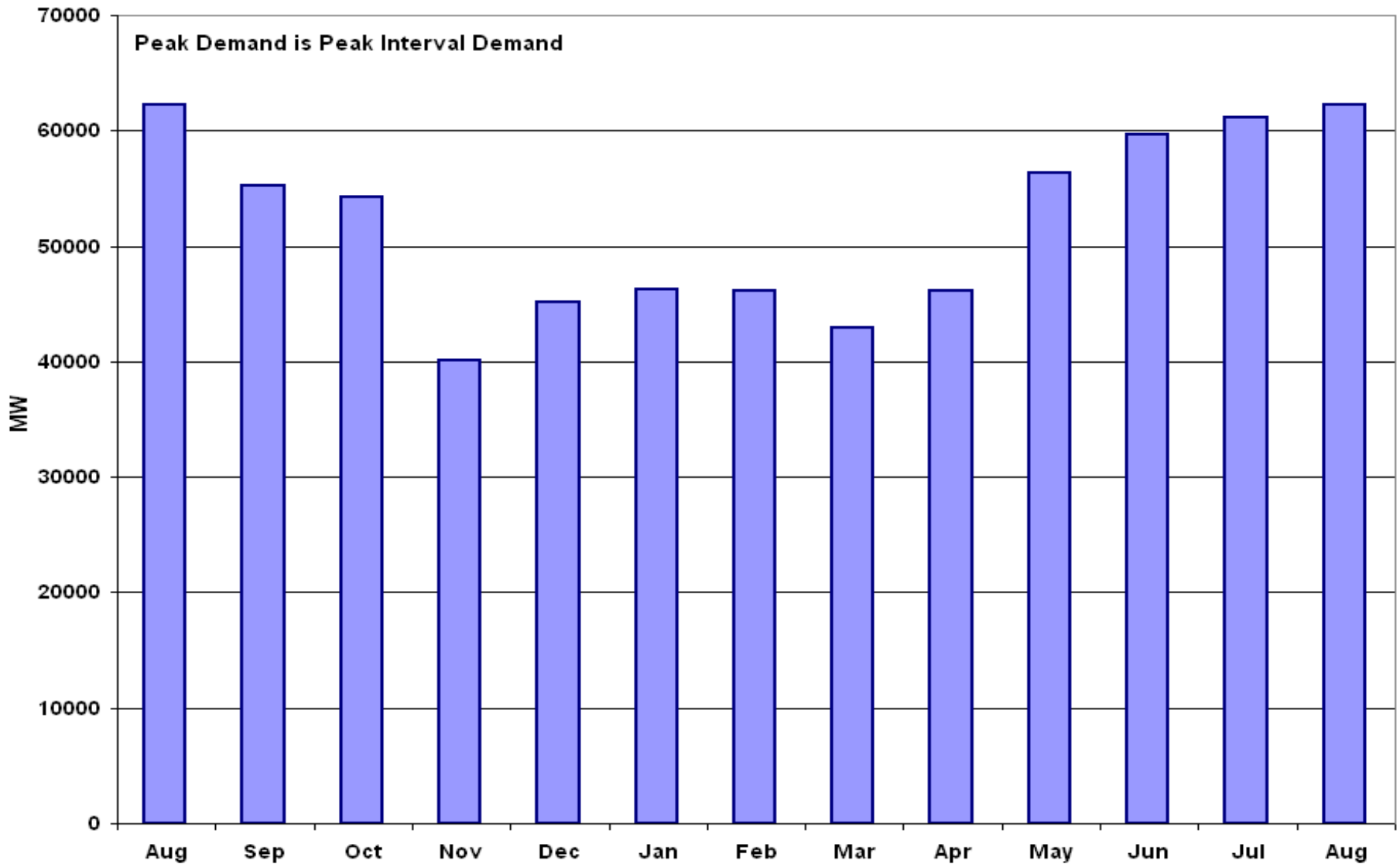


Note: All data are hourly averages during the peak load hour obtained from Resource Plans, EMMS, and AWS Truewind Wind Forecast.

Actual Wind Output Vs Wind Current Resource Plan & Wind Day-Ahead AWS Forecast at Peak Load



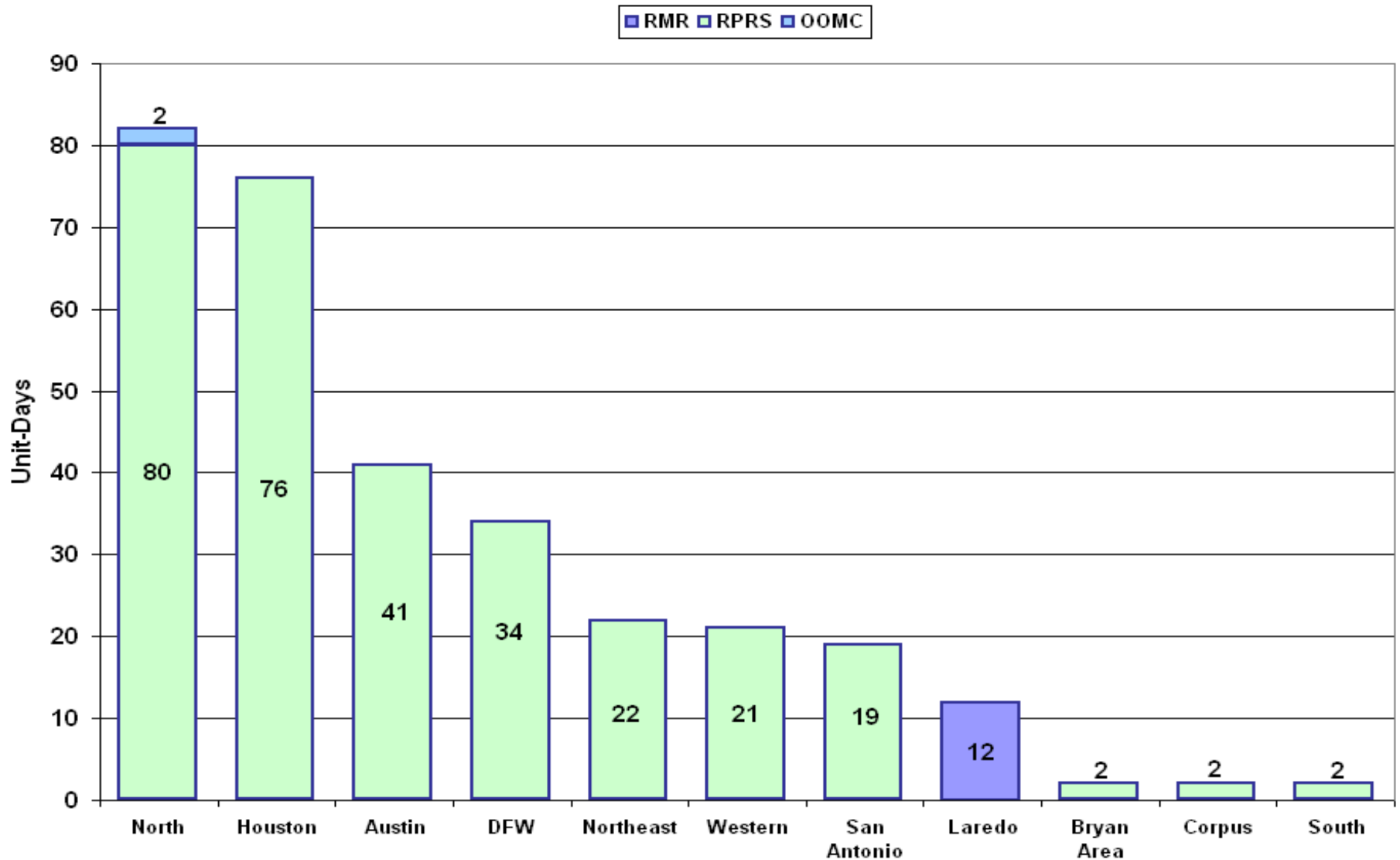
Monthly Peak Demand: Actual



Day-Ahead Load Forecast Performance in August 2008

	Mean Absolute Percent Error (MAPE) for ERCOT Mid-Term Load Forecast (MTLF) Run at 16:00 Day Ahead				
	2005 MAPE	2006 MAPE	2007 MAPE	2008 MAPE (YTD)	August 2008 MAPE
Average Annual MAPE	4.56	3.79	3.55	3.08	3.65

Capacity Purchases of RMR, OOMC & RPRS to Manage Local Congestion in August 2008



Zonal Congestion

CSC	August 07 Days	June 08 Days	July 08 Days	August 08 Days	Last 12 Months Total Days
North – Houston	4	1	0	1 August – 16	79
North – West	5	0	1	1 August – 6	52
West – North	2	12	11	2 August – 1,10	156
South – North	2	0	0	0	38
North - South	N/A	26	5	3 August – 9,10,11	103

Significant System Incidents in August 2008

- **August 11th**
 - A plant's gas supply was interrupted due to the control box's exposure to rain. The plant ramped down and tripped offline in five minutes from a total output of 1662 MW of generation. Load Acting as Resources (LaaR)s were instructed to deploy due to this being a possible NERC Disturbance Control Standard event. Frequency recovered in 7 minutes and 34 seconds of the initial ramp down, well within the 15 minute NERC requirement.
- **August 12th**
 - 14:25 Laredo capacitor bank faulted causing two 69 kV lines to trip and reclose, and two units at a total of 183 MW output to trip offline. 238 MW of load was tripped by action of undervoltage relays. All customers were restored by 15:14. Emergency notice issued due to the forced outages. Received 80 MW of emergency energy from CFE across the Laredo VFT.
- **August 25th**
 - Held IE 01:45 deployments due to a market application issue related to large volume of energy schedules. Fix has been implemented.
- **August 26th**
 - A local failover occurred at 16:04 due to an issue with software. EMS was down for 4 minutes while issue was fixed.

- **Advisories issued for Adjusted Responsive Reserve (ARR) below 3000 MW.**
 - Issued 11 Days.
- **Alerts issued for ARR below 2500 MW in August 2008.**
 - Issued 2 Days
- **Transmission Emergency (operation above single contingency limits):**
 - 8/23 Alert issued loss of Martin Lake – Elkton & Tricorner 345 kV overloads Tyler NE – Delek POI 138 kV and other associated 138 kV circuits in the Tyler area.
 - 8/23, 8/29 & 8/30 Transmission Emergency for the Presidio area due to a 69 KV forced outage. Block load transfer initiated of ERCOT load to CFE at Presidio.
- **No EECs in August 2008.**

- **Termination agreements for all three RMR units in ERCOT were reached effective September 30, 2008**

Questions ?