



Texas Nodal Market Implementation  
ERCOT Board of Directors Meeting

Program status briefing

September 19, 2006

*Ron Hinsley, Chief Information Officer*

*rhinsley@ERCOT.com*

Detailed planning has demonstrated **1/1/09 is feasible**

The key risk mitigation recommended by the Program is phasing of implementation

TPTF approved, in principle, a phased approach with Release 1 first, then Release 2, with Release 3 implementing 7 days after Release 2. If unable to implement Release 3, the market would revert to Zonal

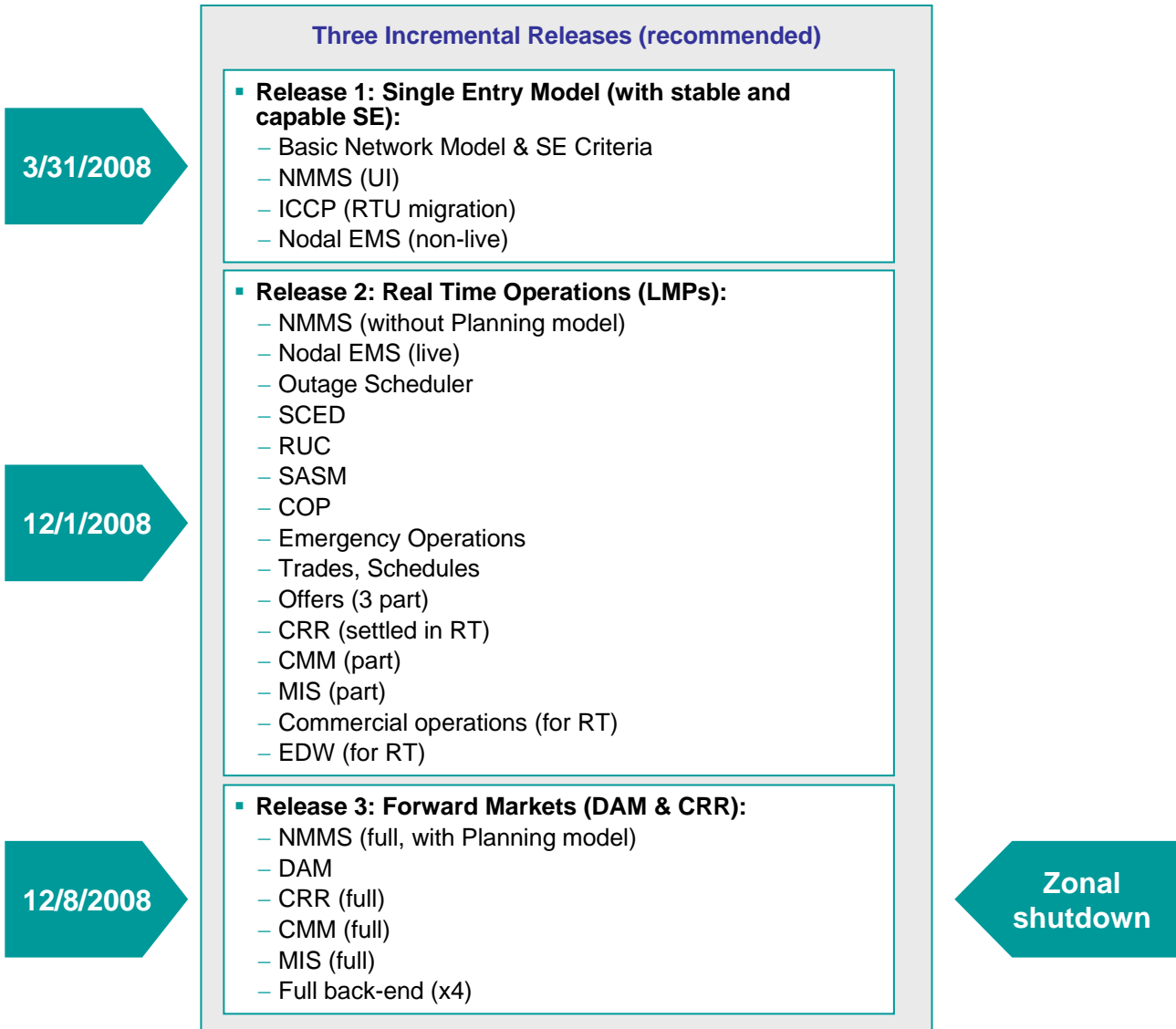
The preferred dates for implementing the Releases, timed for seasonality, were:

- **Release 1:** Single Entry Model (with stable and capable State Estimator/SCADA) – **3/31/08**
- **Release 2:** Real Time Operations (LMPs) – **12/1/08**
- **Release 3:** Forward Markets (DAM & CRR) – **12/8/08**

**We seek concurrence for this recommendation through this briefing**

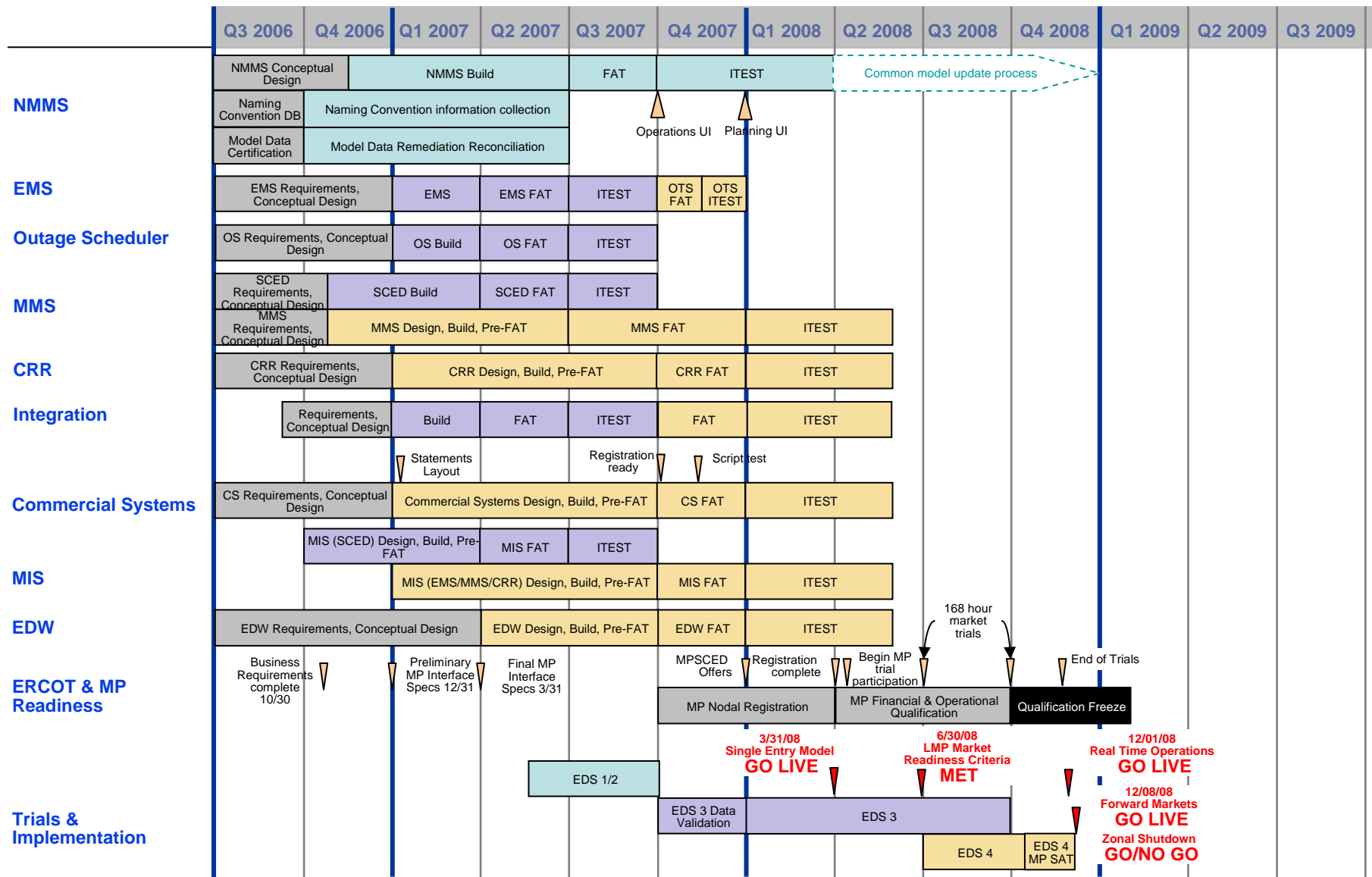
Budget based on recommended scenario will be presented at 9/19/2006 Board meeting.

Endorsement of budget will be requested during October Board meeting.



# Recommended timeline – Nodal Market & Zonal Shutdown December 2008

Release 1 (3/31/08); Release 2 (12/1/08); Release 3 (12/8/08)



Detailed planning has demonstrated 1/1/09 is feasible

The key risk mitigation recommended by the Program is phasing of implementation

TPTF approved, in principle, a phased approach with Release 1 first, then Release 2, with Release 3 implementing 7 days after Release 2. If unable to implement Release 3, the market would revert to Zonal

The preferred dates for implementing the Releases, timed for seasonality, were:

- Release 1: Single Entry Model (with stable and capable SE) – 3/31/08
- Release 2: Real Time Operations (LMPs) – 12/1/08
- Release 3: Forward Markets (DAM & CRR) – 12/8/08

**We seek concurrence for this recommendation through this briefing**

## Overall program status is **amber**, based on achievability of 1/1/09 delivery

### **1/1/09 is feasible:**

- TPTF recommendation 9/11
- BOD 9/19/06 schedule commitment - concurrence of scenario recommendation and date

*Individual Projects will incorporate the decision into detailed schedules and budgets to enable baselining*

### **Staffing is improving:**

- Vendor community rallying to solve EMS skill gap
- Integration Project Manager identified

*Key project resources remain susceptible to production priorities*

### **Major vendor selections approaching completion:**

- UISOL selected as Integration Designer/QA
- MIS Vendor selected; MSA/SOW in process
- Integration Builder TDB

*Statements of Work (SOWs) for development are in preparation for the first vendors to emerge from Requirements*

❑ O&M (,000)	
▪ Internal labor	\$ 1,992
▪ Equipment, tools, supplies	34
▪ Outside services	1,980
▪ Facilities and Utilities	225
▪ Employee expenses	26
▪ Interest and fees	79
▪ <u>Other</u>	<u>13</u>
▪ Total O&M:	\$4,349
❑ Capital	
▪ <u>Total Capital</u>	<u>\$3,993</u>
❑ Total spending through August	\$8,342

Note: Total spending through July \$4,354K