



ERCOT Grid Operations
Wind Integration Report : 12/12/2015

Current Daily Values:

Peak Load	38,087 MW
Peak Load Hour (HE)	19
Wind at Peak Load Hour	11,294 MW

Max Wind	12,482 MW
Max Wind Time	21:29
Penetration at Max Wind Time	34.35 %

Max Wind Penetration	40.76 %
Max Wind Penetration Time	02:55
Wind Generation at Max Wind Penetration Time	11,280 MW

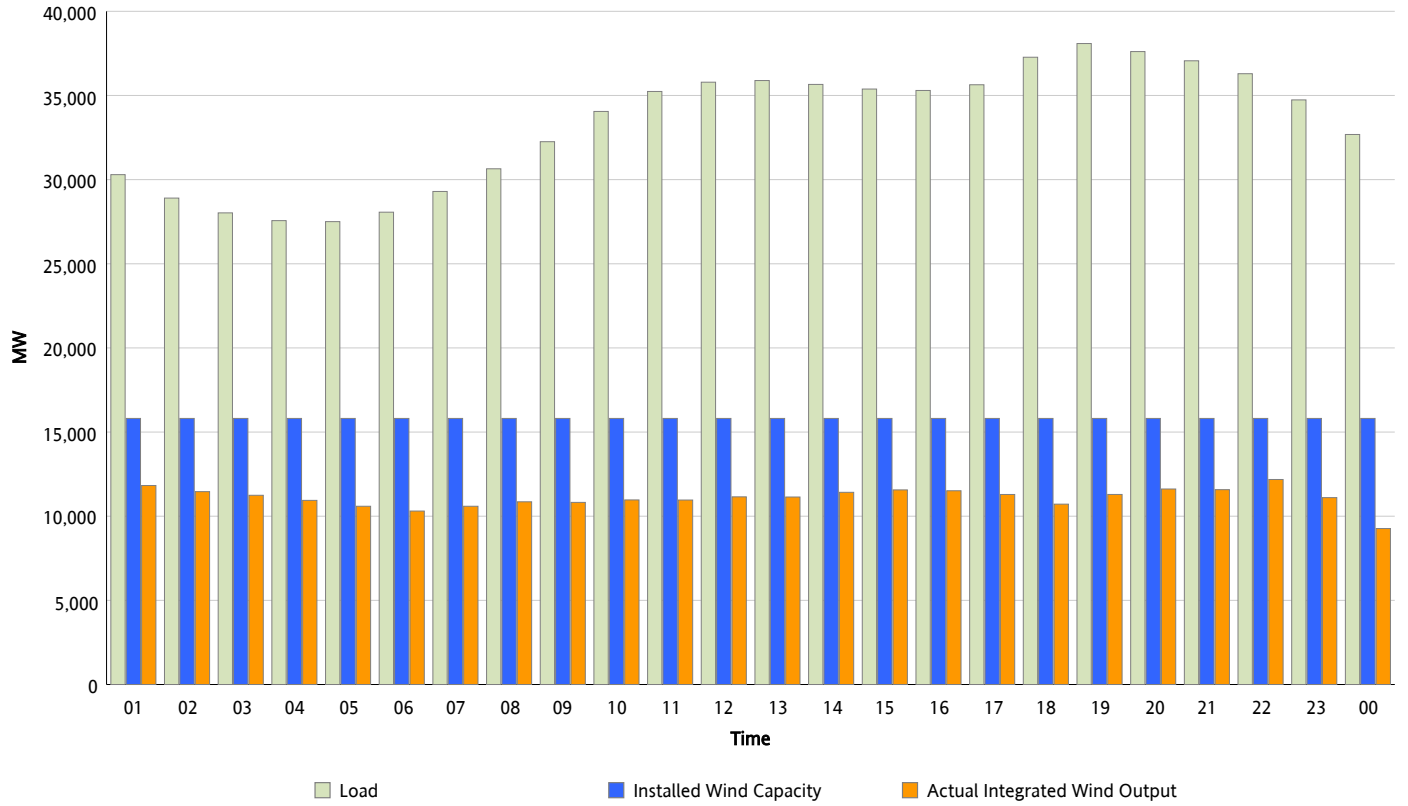
All Time Record Values:

Record Wind Generation	12,971 MW
Record Wind Generation Time	11/25/2015 21:10
Penetration at Record Wind Generation Time	36.86 %

Record Wind Penetration	43.55 %
Record Wind Penetration Time	11/26/2015 02:36
Wind Generation at Record Wind Penetration	11,649 MW

Hourly Average Actual Load vs. Actual Wind Output

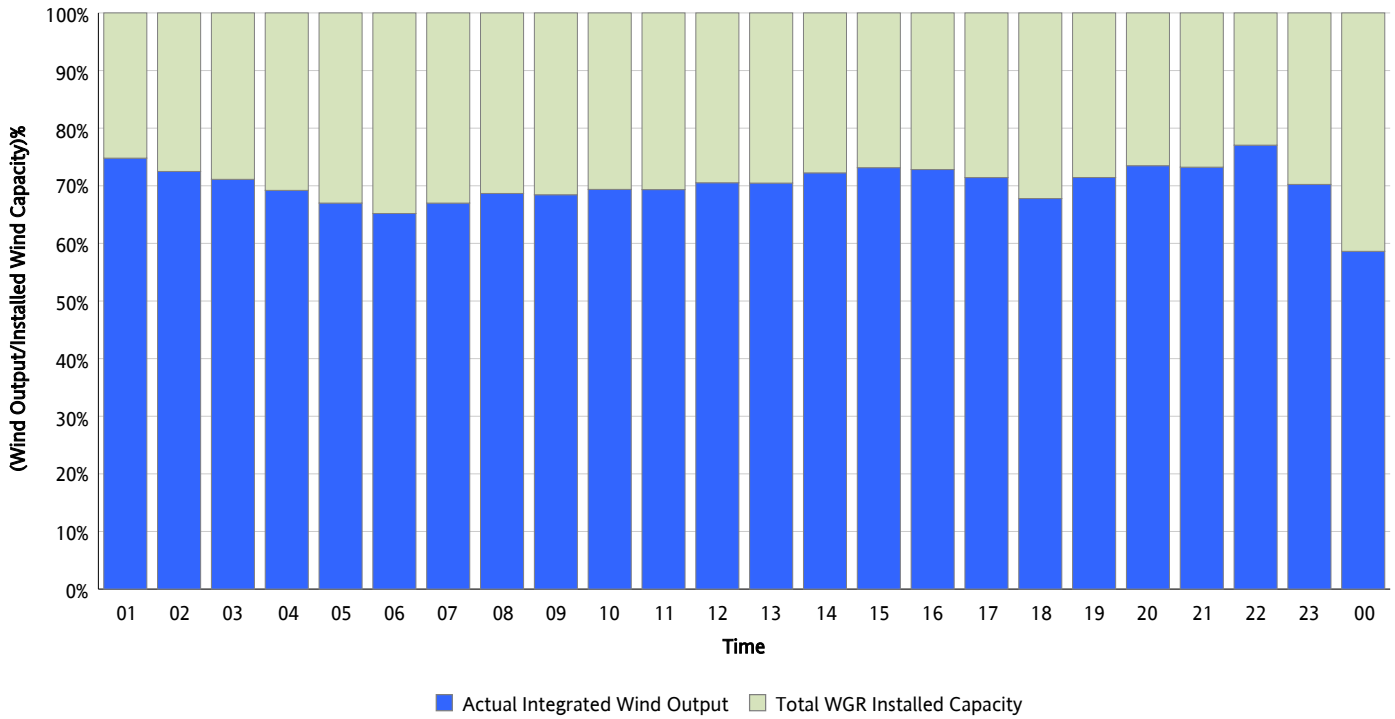
12/12/2015



* Wind Record and Wind Max represent instantaneous values and the rest of the values are integrated over the hour.
Capacity numbers used in the graphs are based on the expected commercial operation date of each Wind Generation Resource.

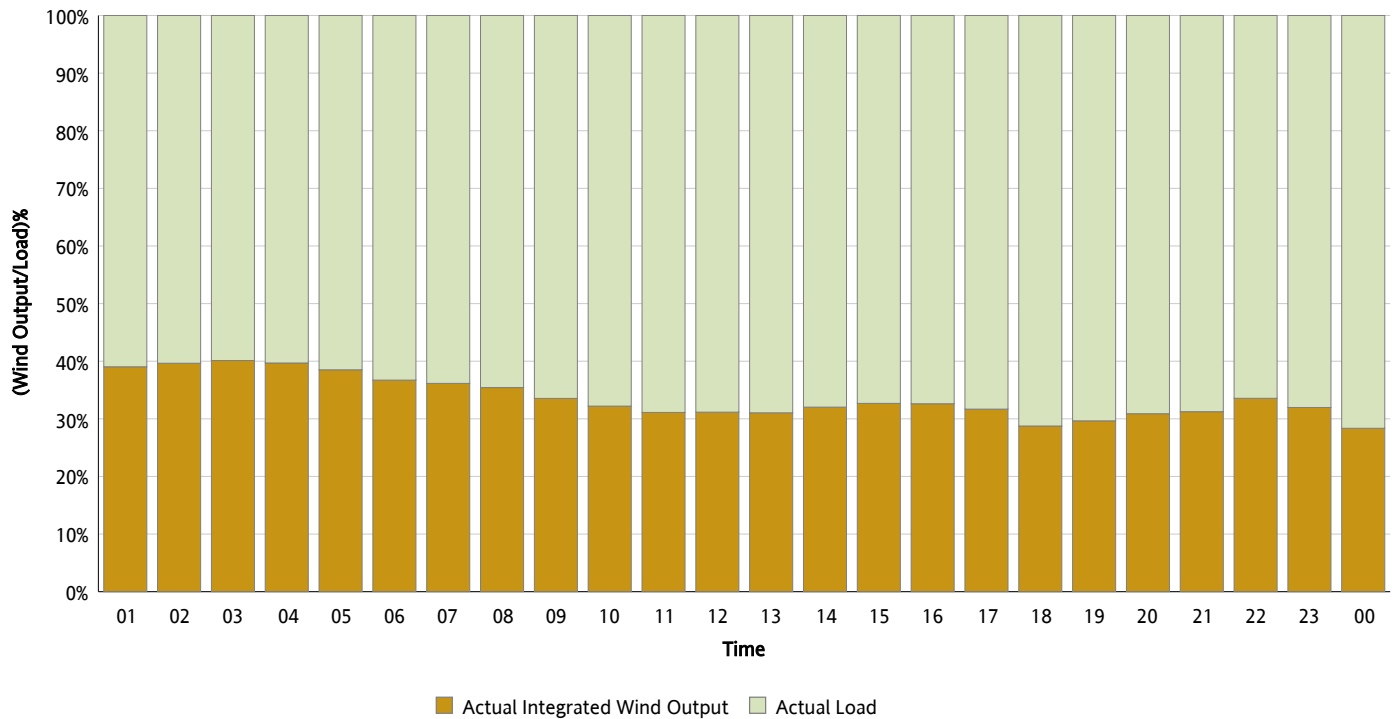
Actual Wind Output as a Percentage of the Total Installed Wind Capacity

12/12/2015



Actual Wind Output as a Percentage of the ERCOT Load

12/12/2015



ERCOT Load vs. Actual Wind Output

12/05/2015 - 12/12/2015

