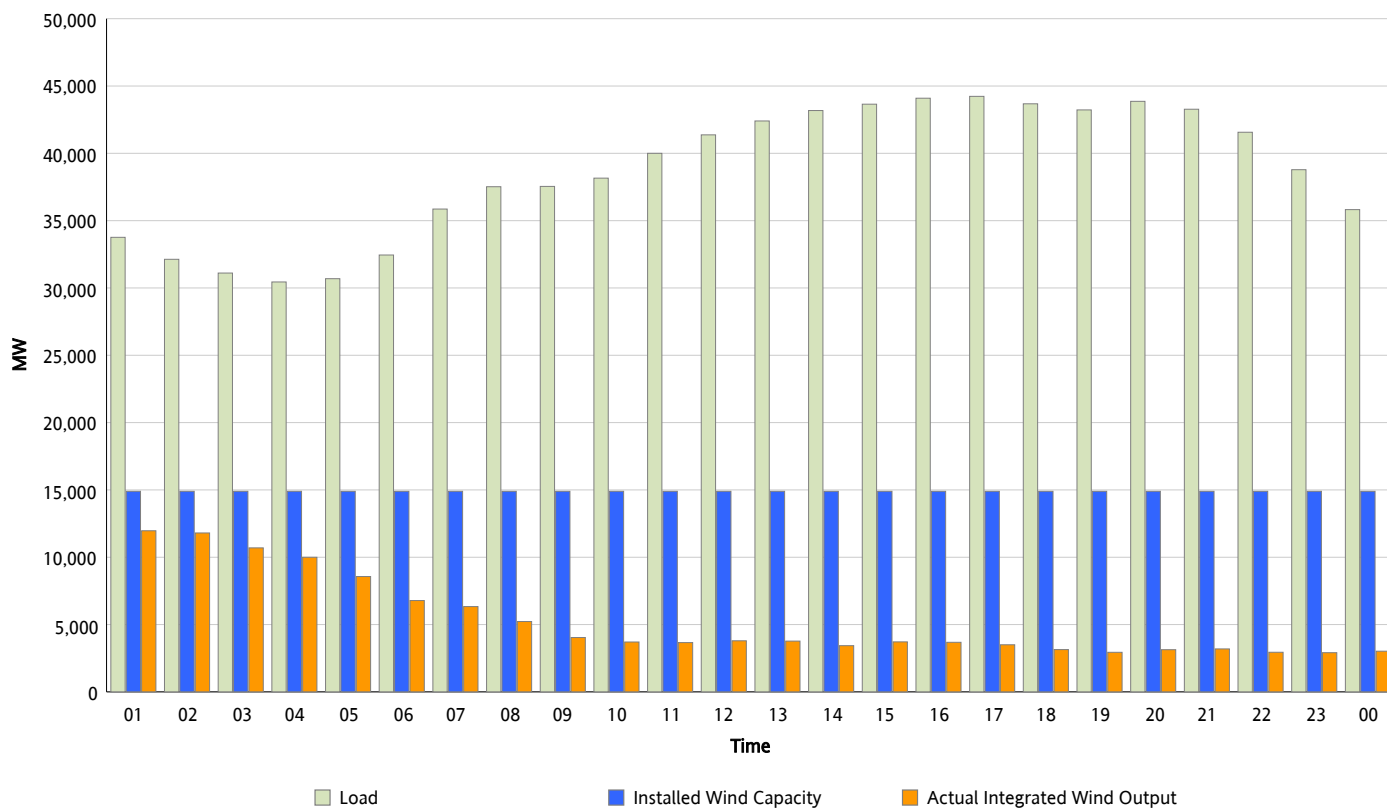




## ERCOT Grid Operations Wind Integration Report : 10/22/2015

Peak Load	<b>44,231 MW</b>
Load Peak Hour (HE)	<b>17</b>
Wind Over Peak	<b>3,498 MW</b>
Wind Record 10/22/15	<b>12,238 MW</b>
Max Wind Value*	<b>12,238 MW</b>
Wind Peak Time	<b>00:48</b>
Wind Integration %	<b>36.83 %</b>

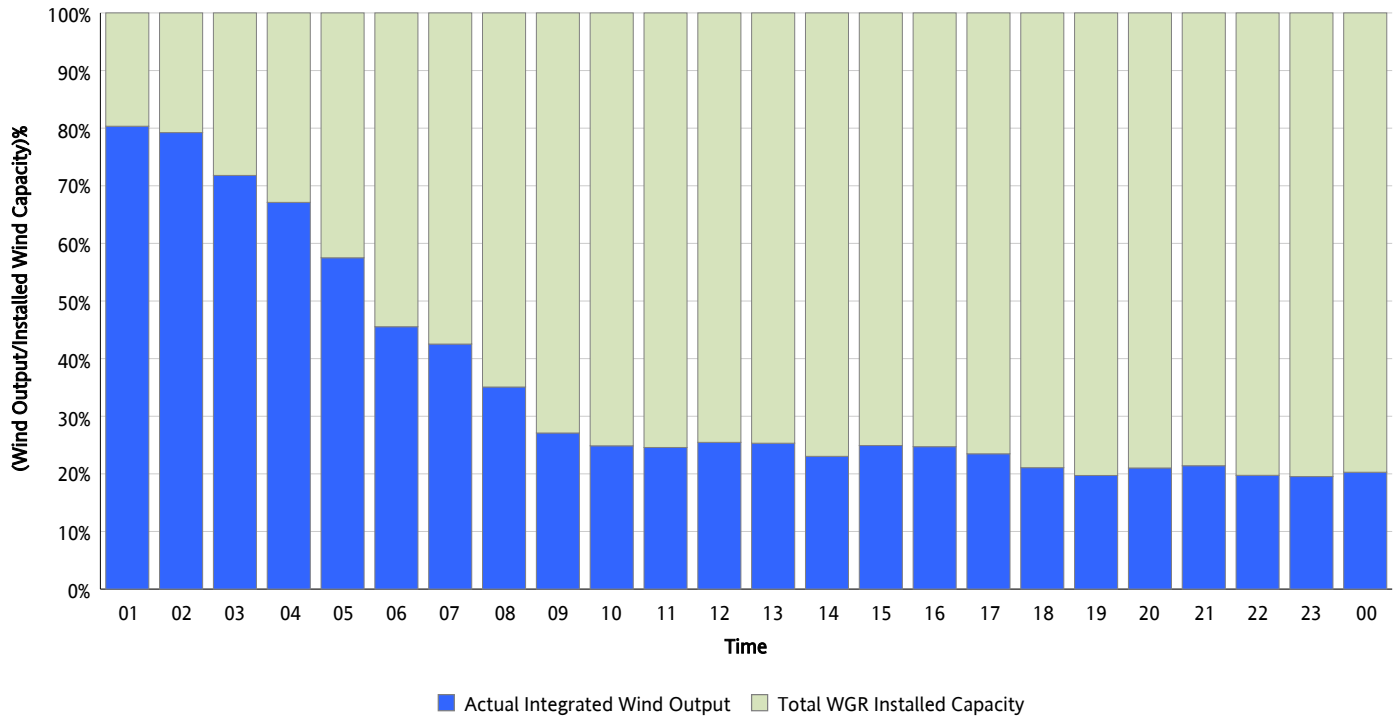
**Hourly Average Actual Load vs. Actual Wind Output  
10/22/2015**



\* Wind Record and Wind Max represent instantaneous values and the rest of the values are integrated over the hour.  
Capacity numbers used in the graphs are based on the expected commercial operation date of each Wind Generation Resource.

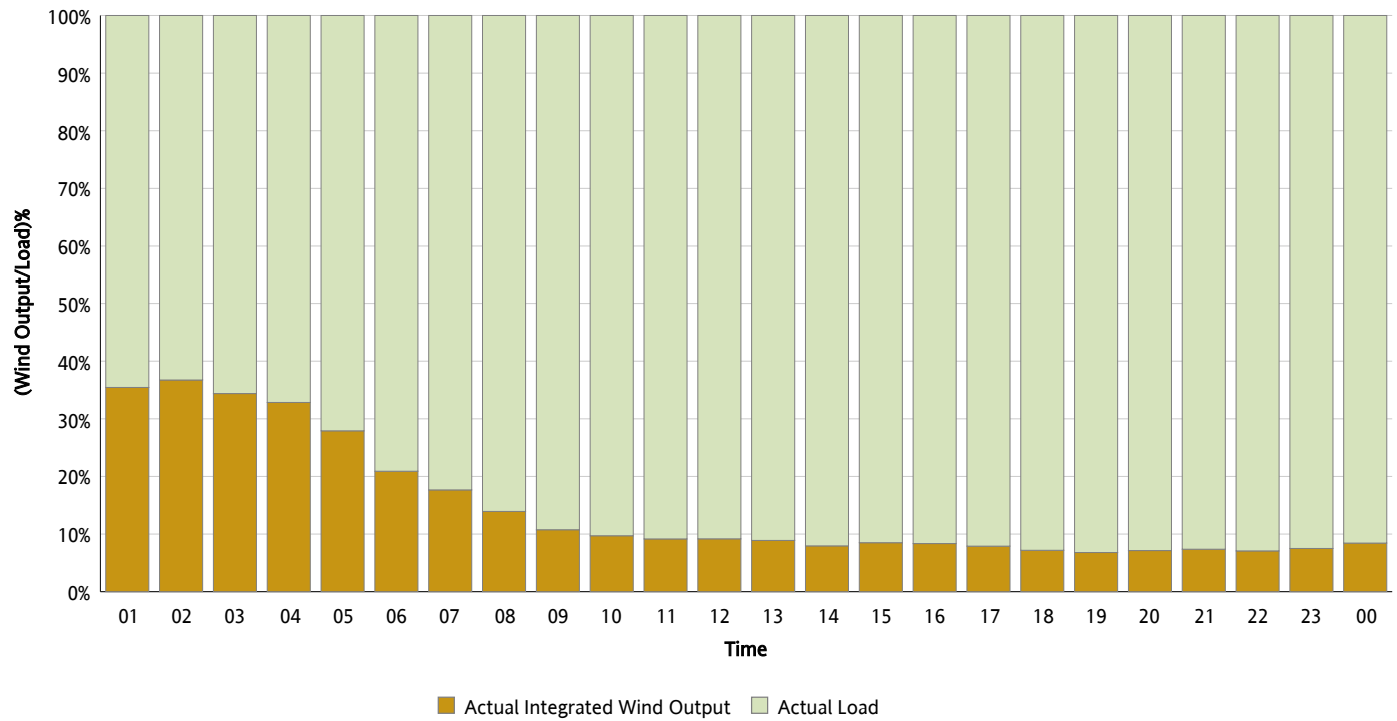
Actual Wind Output as a Percentage of the Total Installed Wind Capacity

10/22/2015



Actual Wind Output as a Percentage of the ERCOT Load

10/22/2015



### ERCOT Load vs. Actual Wind Output

10/15/2015 - 10/22/2015

