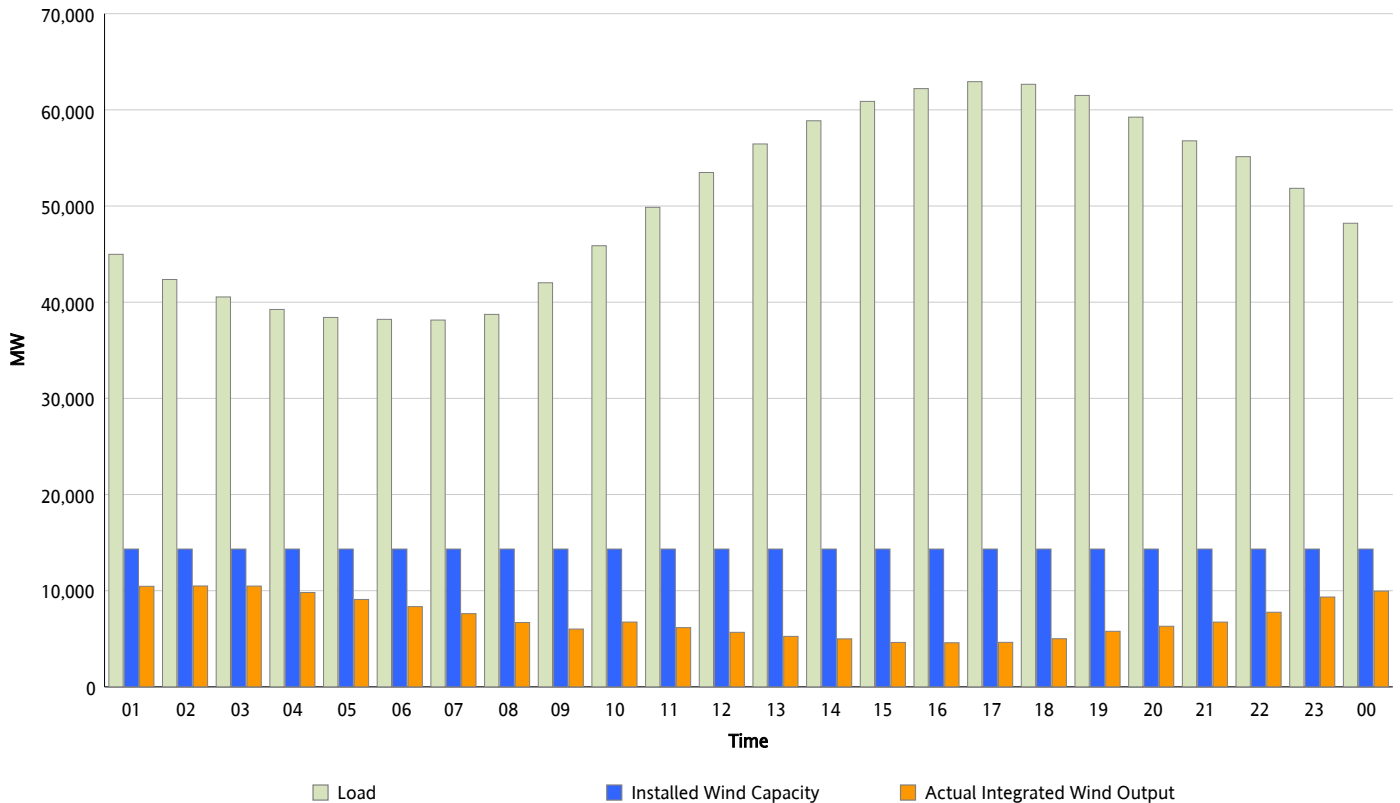




## ERCOT Grid Operations Wind Integration Report : 07/18/2015

Peak Load	<b>62,932 MW</b>
Load Peak Hour (HE)	<b>17</b>
Wind Over Peak	<b>4,629 MW</b>
Wind Record 02/19/15	<b>11,154 MW</b>
Max Wind Value*	<b>10,666 MW</b>
Wind Peak Time	<b>02:11</b>
Wind Integration %	<b>26.02 %</b>

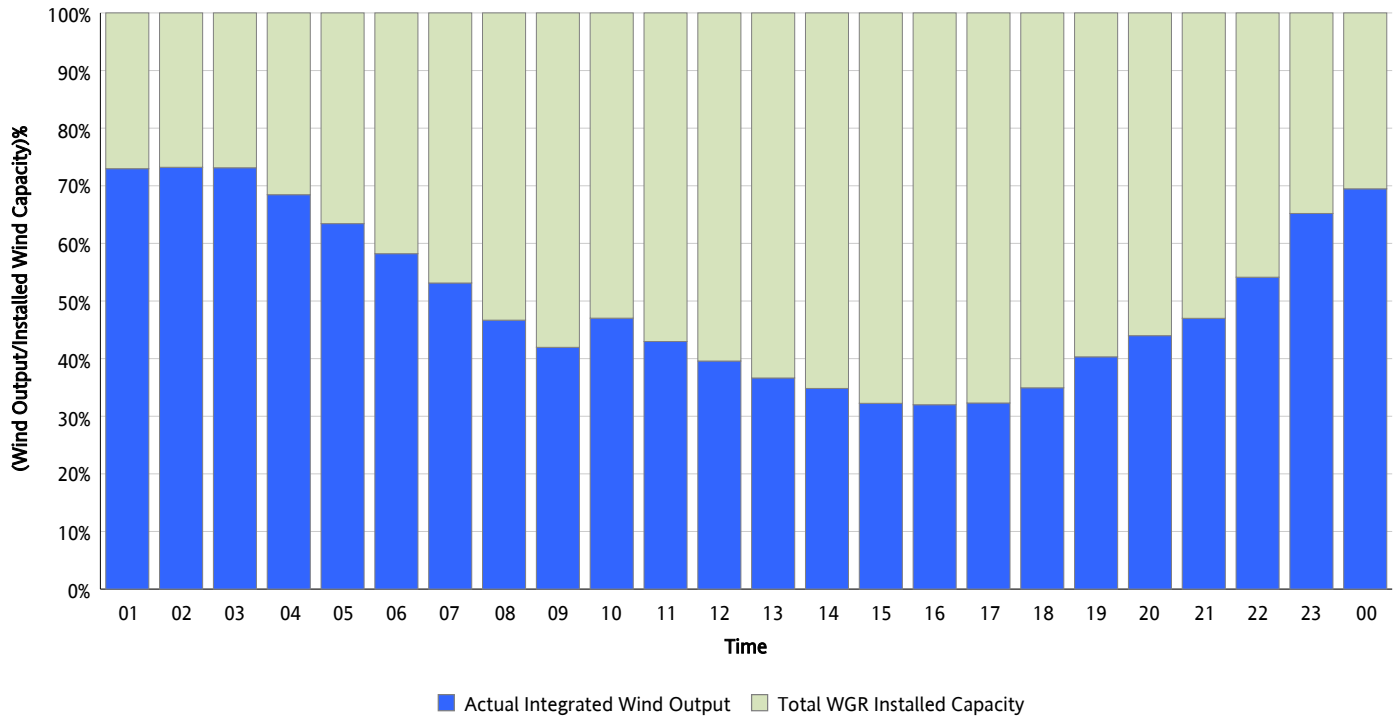
**Hourly Average Actual Load vs. Actual Wind Output  
07/18/2015**



*\* Wind Record and Wind Max represent instantaneous values and the rest of the values are integrated over the hour.  
Capacity numbers used in the graphs are based on the expected commercial operation date of each Wind Generation Resource.*

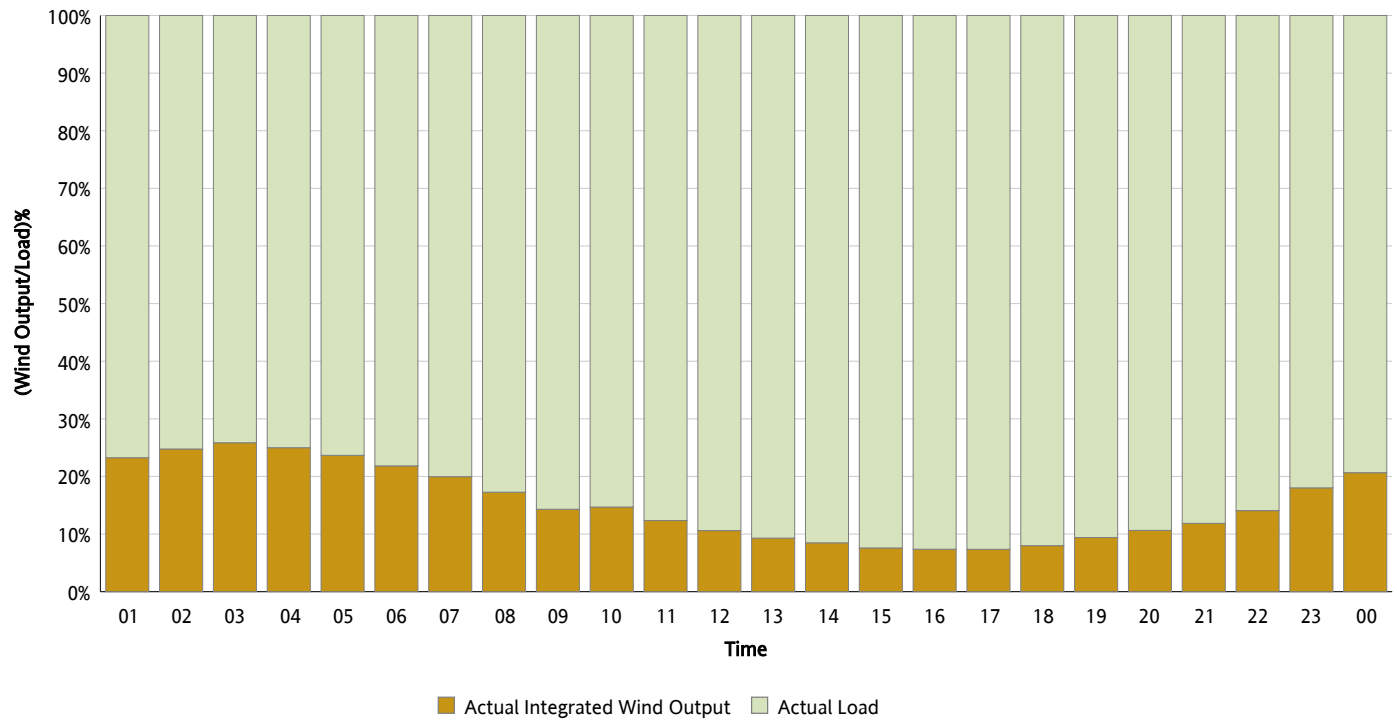
Actual Wind Output as a Percentage of the Total Installed Wind Capacity

07/18/2015



Actual Wind Output as a Percentage of the ERCOT Load

07/18/2015



### ERCOT Load vs. Actual Wind Output

07/11/2015 - 07/18/2015

