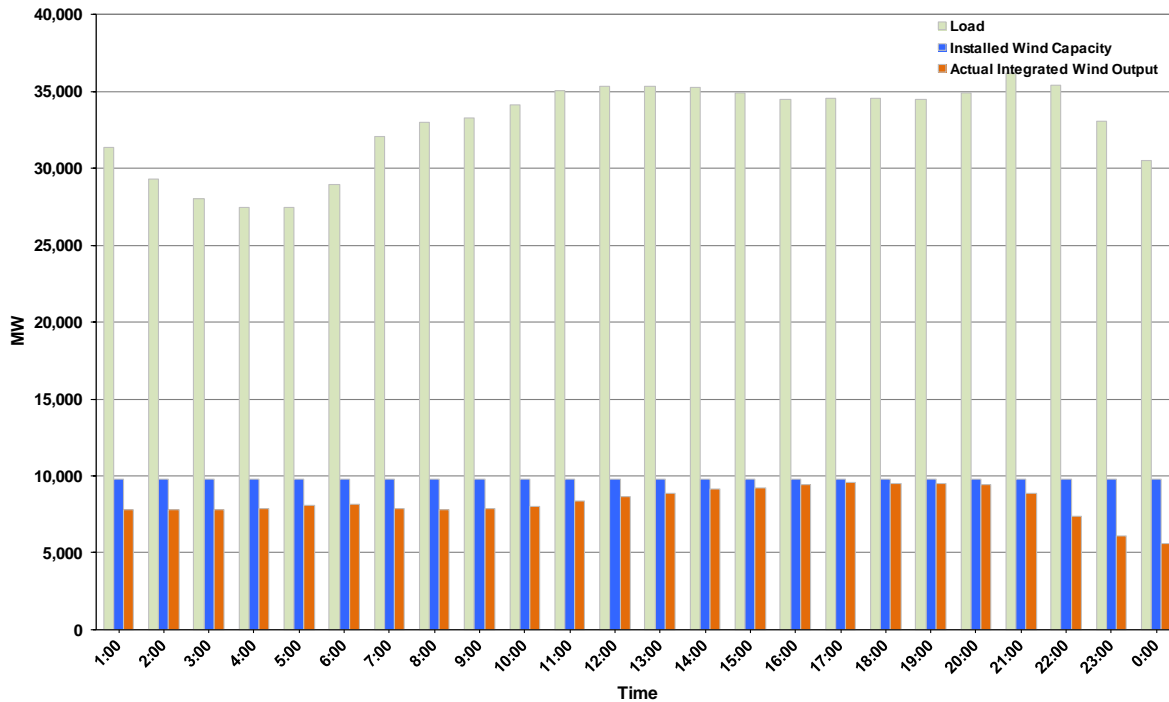




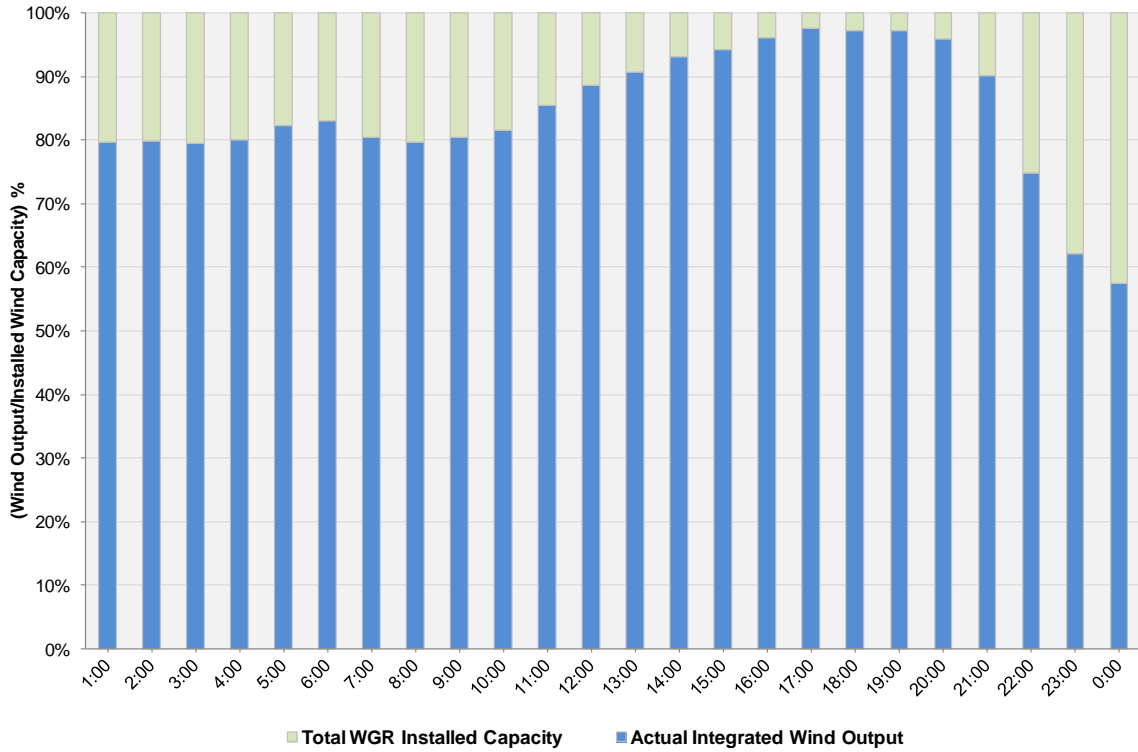
ERCOT Grid Operations Wind Integration Report: 05/02/2013

| | |
|----------------------|------------------|
| Peak Load | 36,164 MW |
| Load Peak Hour (HE) | 21 |
| Wind over Peak | 8,830 MW |
| Wind Record 05/02/13 | 9,674 MW |
| Max Wind Value | 9,674 MW |
| Wind Peak Time | 16:30 |
| Wind Integration % | 28.05% |

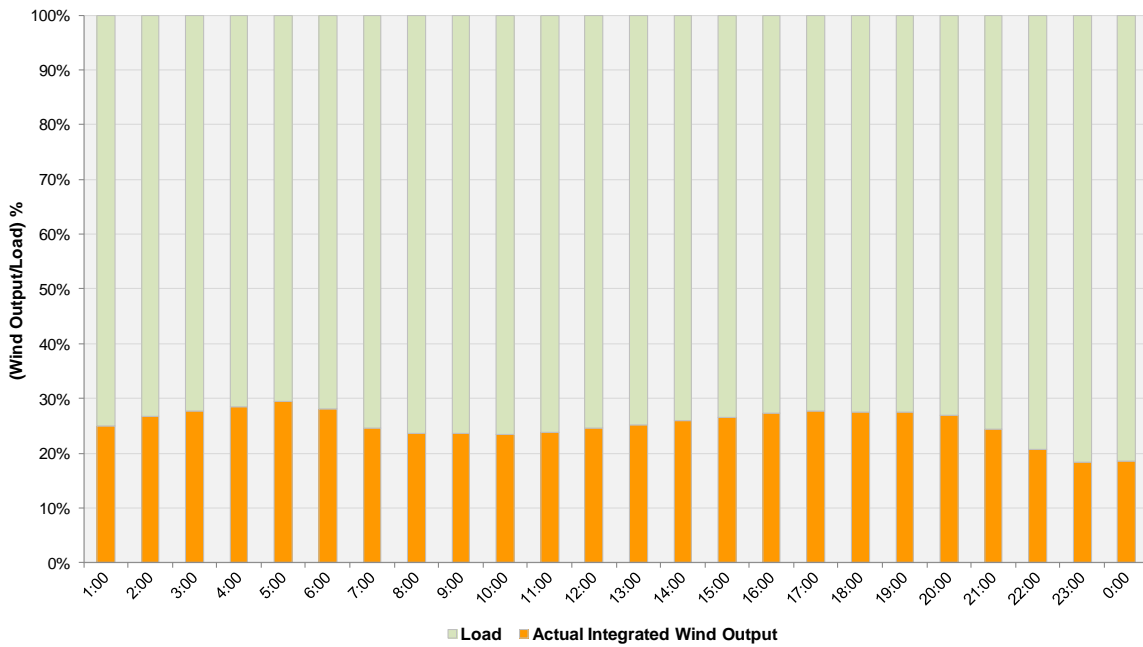
**Hourly Average Actual Load vs. Actual Wind Output
05-02-2013**



Actual Wind Output as a Percentage of the Total Installed Wind Capacity
05-02-2013



Actual Wind Output as a Percentage of the ERCOT Load
05-02-2013



ERCOT Load vs. Actual Wind Output 4/25/2013 - 5/2/2013

