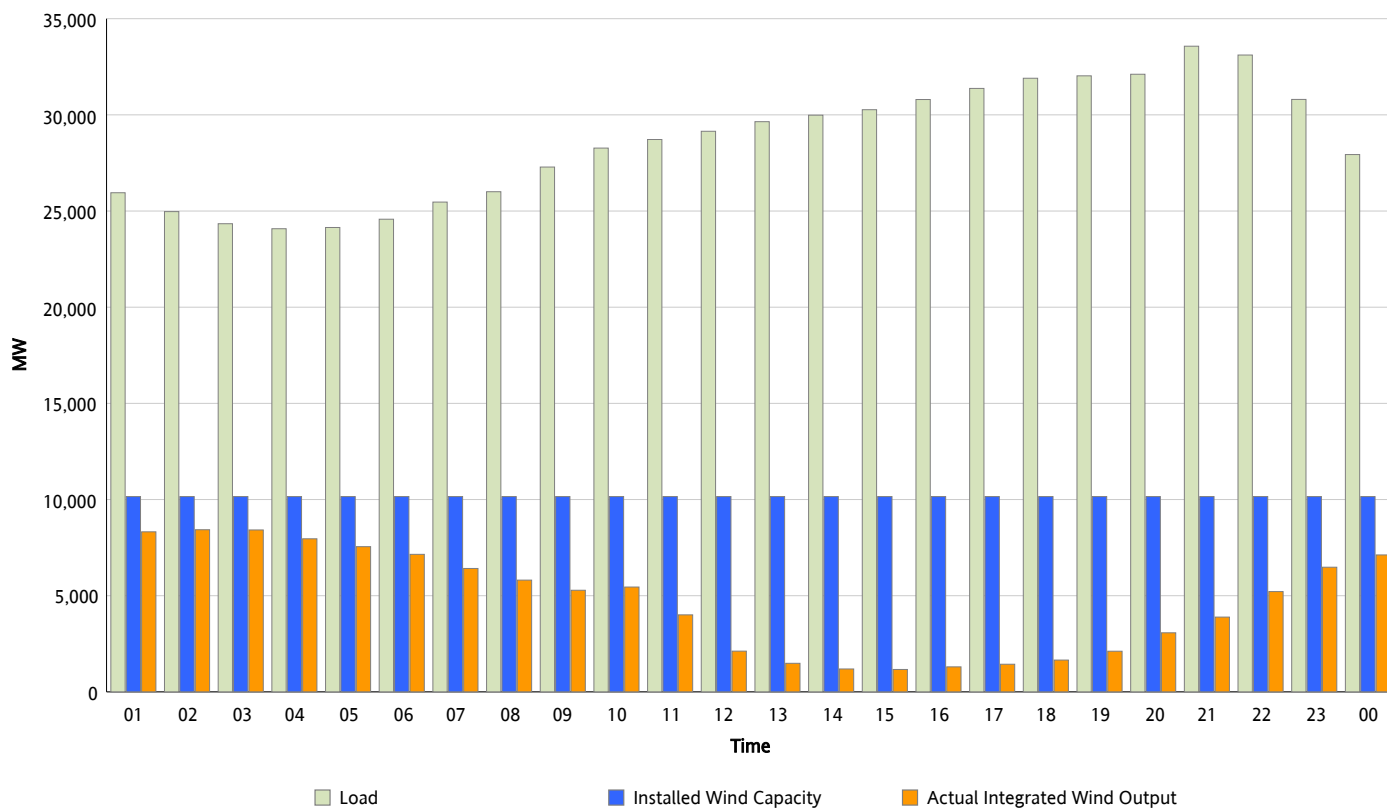




## ERCOT Grid Operations Wind Integration Report : 04/21/2013

Peak Load	33,571 MW
Load Peak Hour (HE)	21
Wind Over Peak	3,888 MW
Wind Record 02/09/13	9,481 MW
Max Wind Value*	8,573 MW
Wind Peak Time	02:10
Wind Integration %	35.05 %

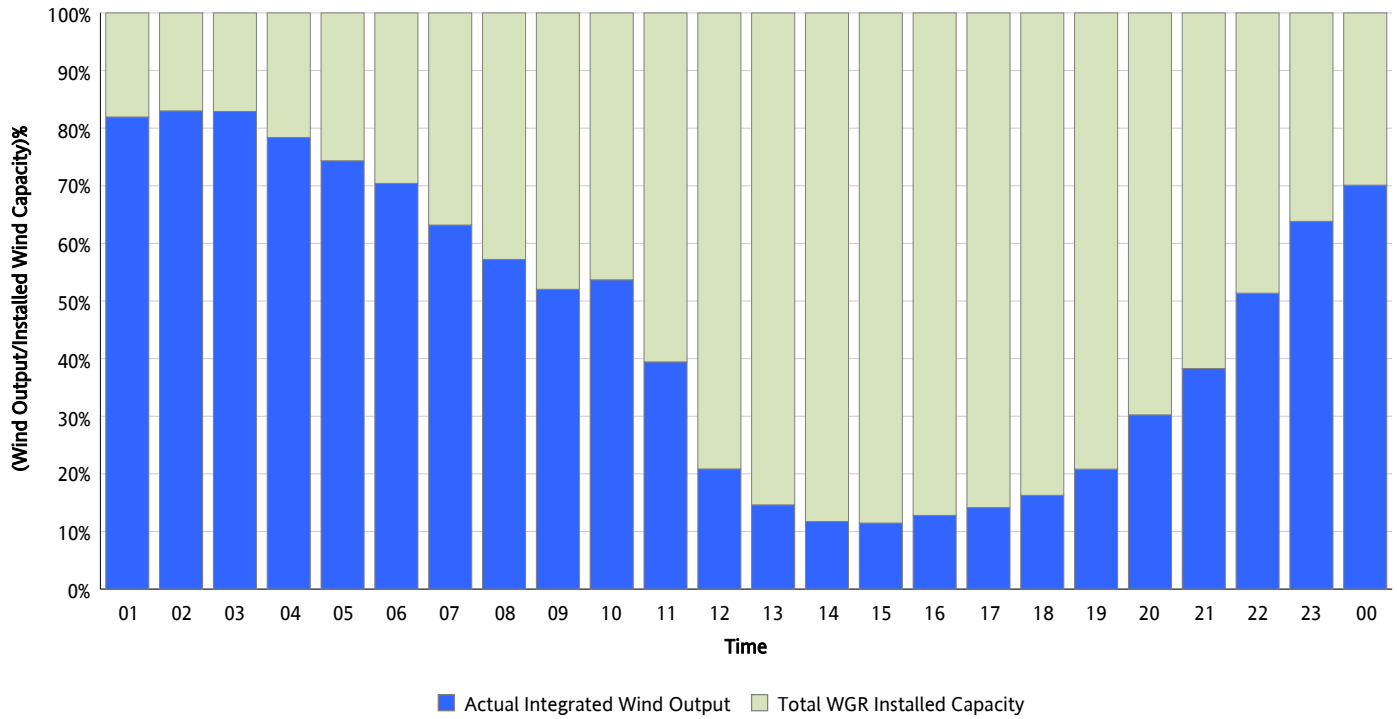
**Hourly Average Actual Load vs. Actual Wind Output  
04/21/2013**



*\* Wind Record and Wind Max represent instantaneous values and the rest of the values are integrated over the hour*

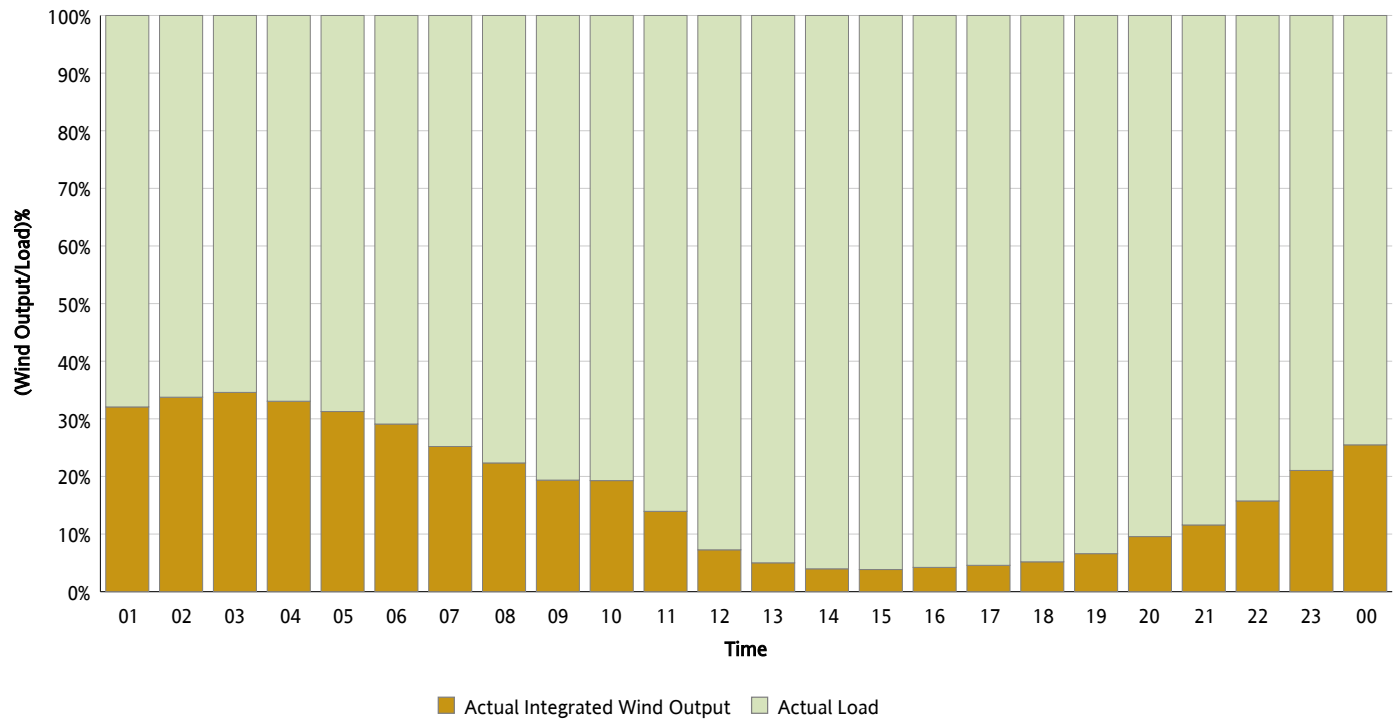
Actual Wind Output as a Percentage of the Total Installed Wind Capacity

04/21/2013



Actual Wind Output as a Percentage of the ERCOT Load

04/21/2013



### ERCOT Load vs. Actual Wind Output

04/14/2013 - 04/21/2013

