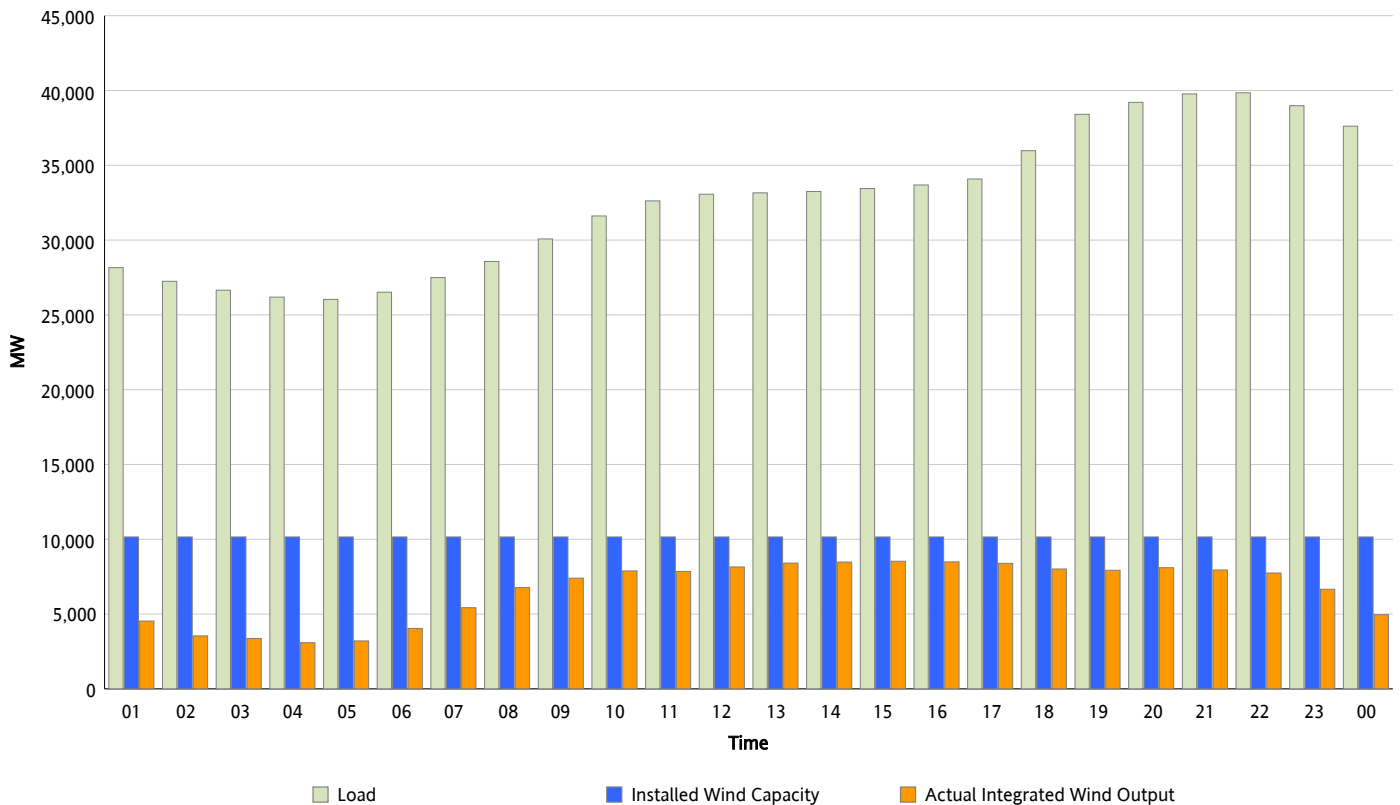




ERCOT Grid Operations Wind Integration Report : 12/25/2012

Peak Load	39,847 MW
Load Peak Hour (HE)	22
Wind Over Peak	7,745 MW
Wind Record 12/25/12	8,638 MW
Max Wind Value*	8,638 MW
Wind Peak Time	15:11
Wind Integration %	25.71 %

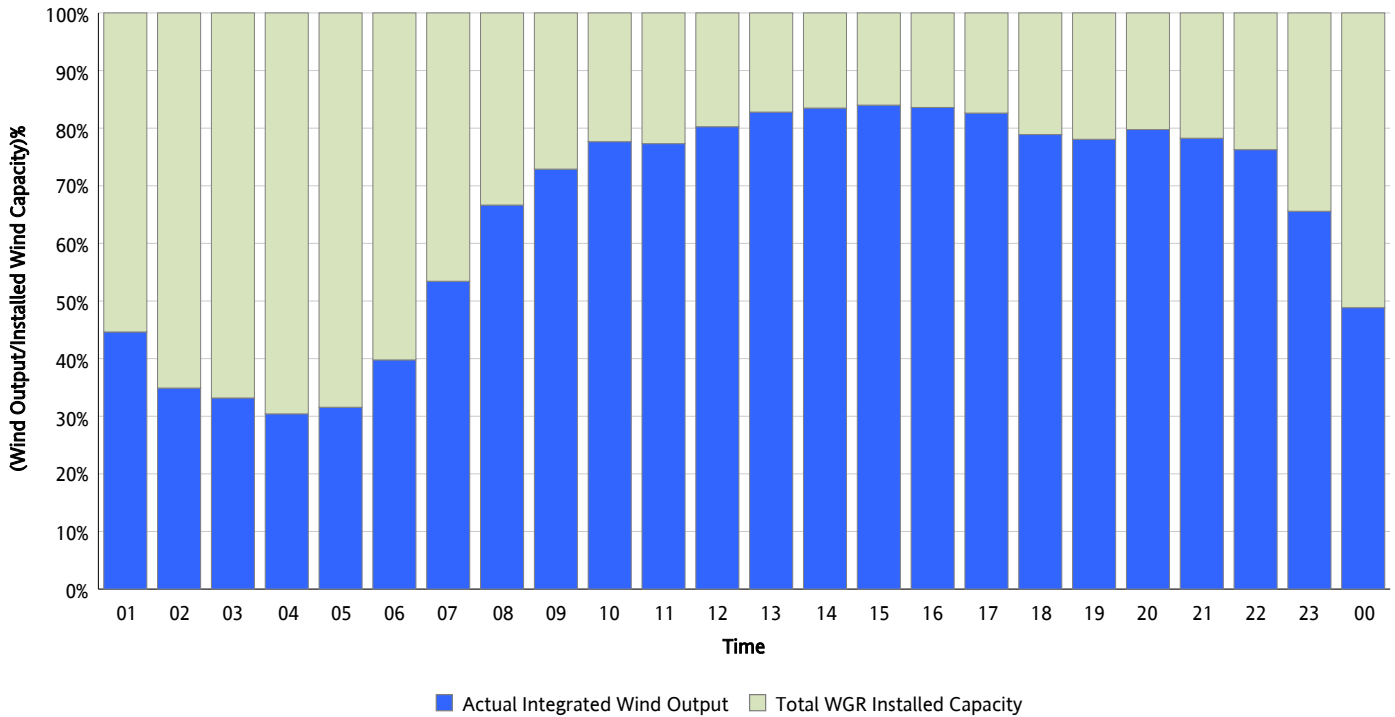
**Hourly Average Actual Load vs. Actual Wind Output
12/25/2012**



** Wind Record and Wind Max represent instantaneous values and the rest of the values are integrated over the hour*

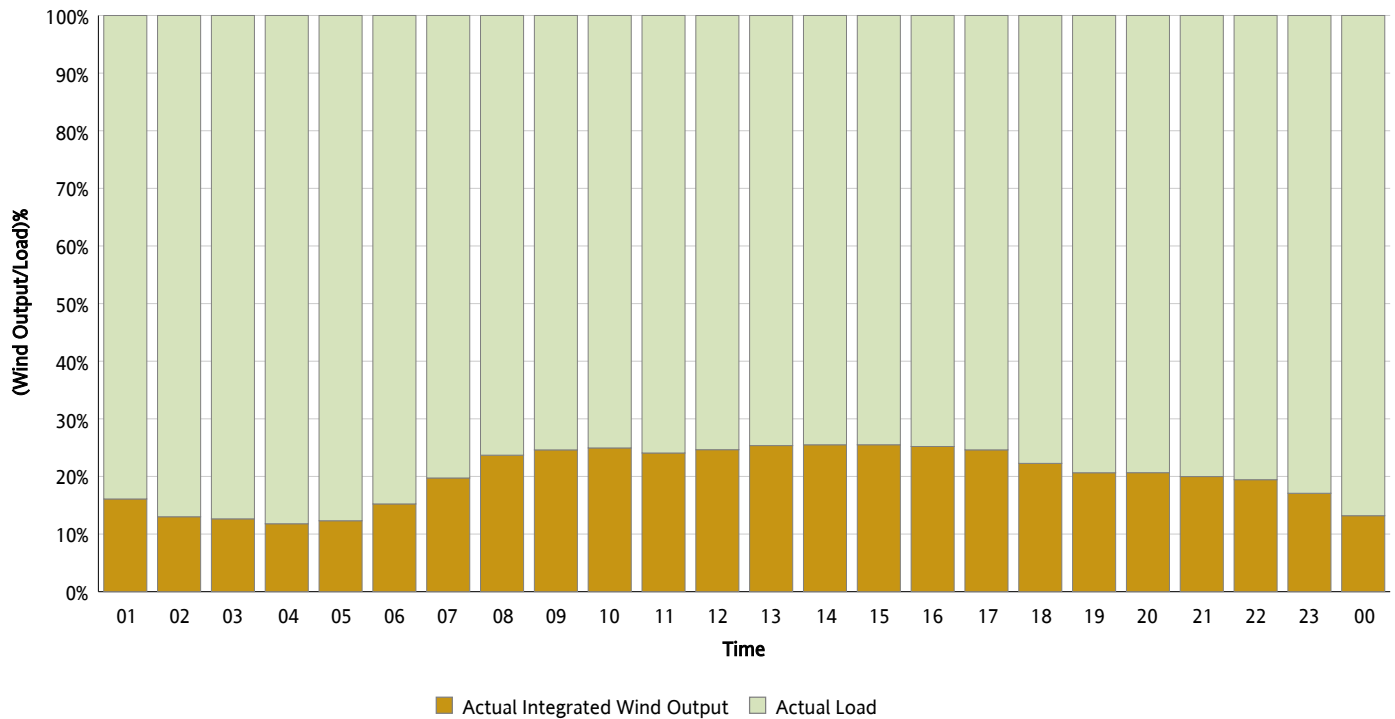
Actual Wind Output as a Percentage of the Total Installed Wind Capacity

12/25/2012



Actual Wind Output as a Percentage of the ERCOT Load

12/25/2012



ERCOT Load vs. Actual Wind Output

12/18/2012 - 12/25/2012

