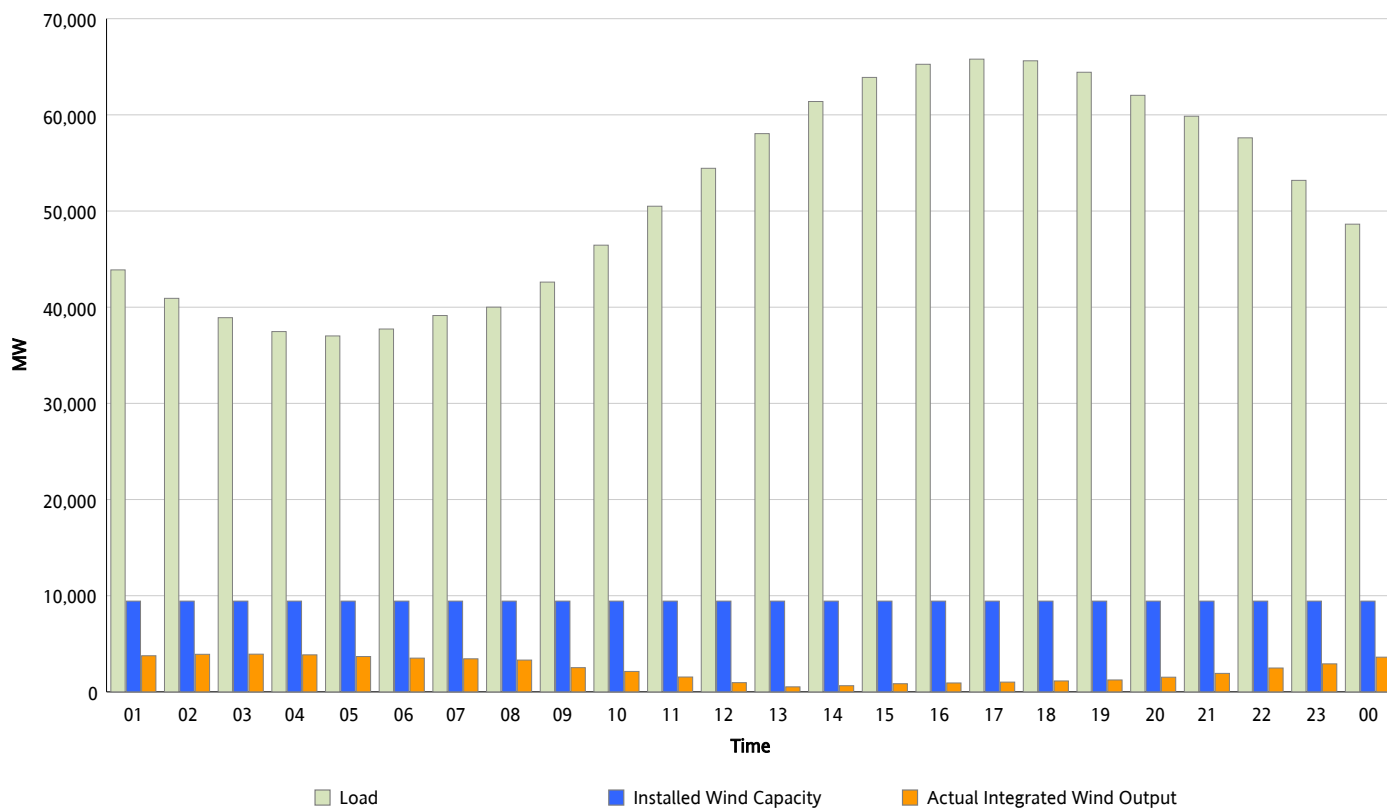




ERCOT Grid Operations Wind Integration Report : 07/31/2012

Peak Load	65,794 MW
Load Peak Hour (HE)	17
Wind Over Peak	1,016 MW
Wind Record 06/19/12	8,368 MW
Max Wind Value*	4,055 MW
Wind Peak Time	02:48
Wind Integration %	10.6 %

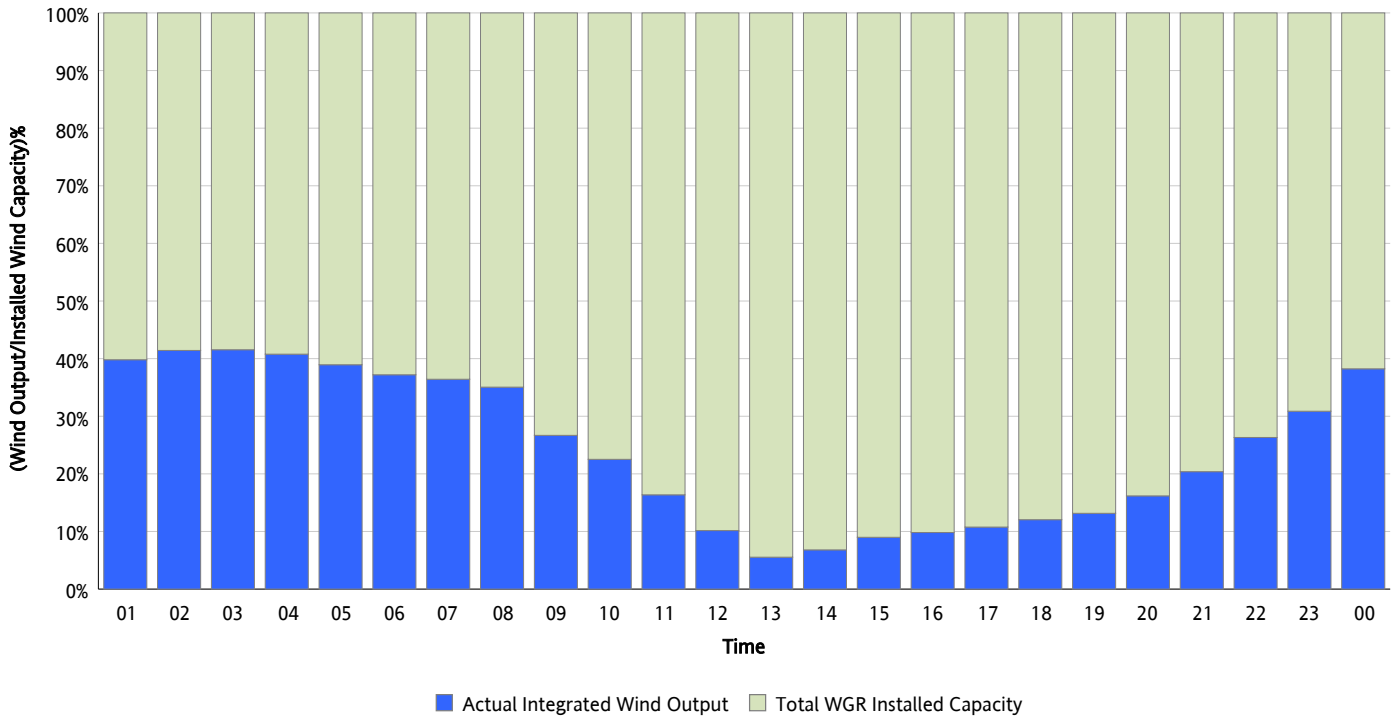
**Hourly Average Actual Load vs. Actual Wind Output
07/31/2012**



** Wind Record and Wind Max represent instantaneous values and the rest of the values are integrated over the hour*

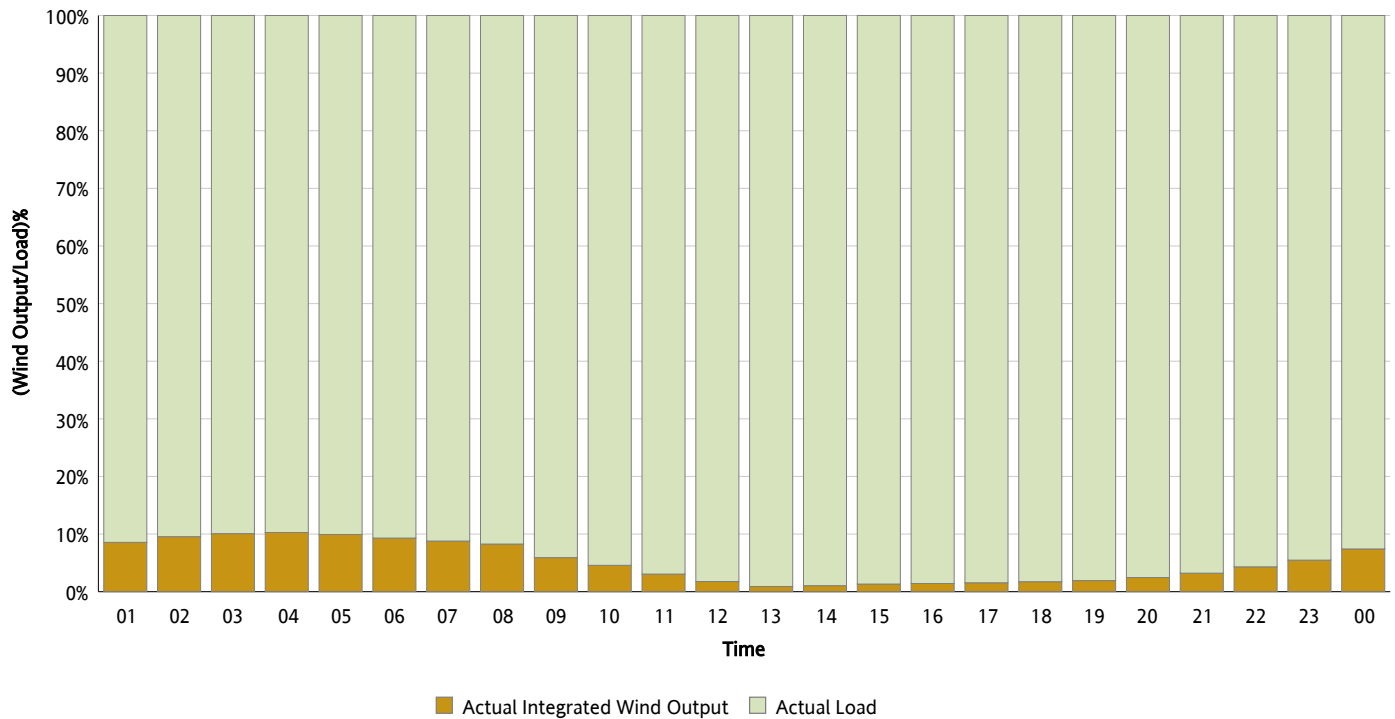
Actual Wind Output as a Percentage of the Total Installed Wind Capacity

07/31/2012



Actual Wind Output as a Percentage of the ERCOT Load

07/31/2012



ERCOT Load vs. Actual Wind Output

07/24/2012 - 07/31/2012

