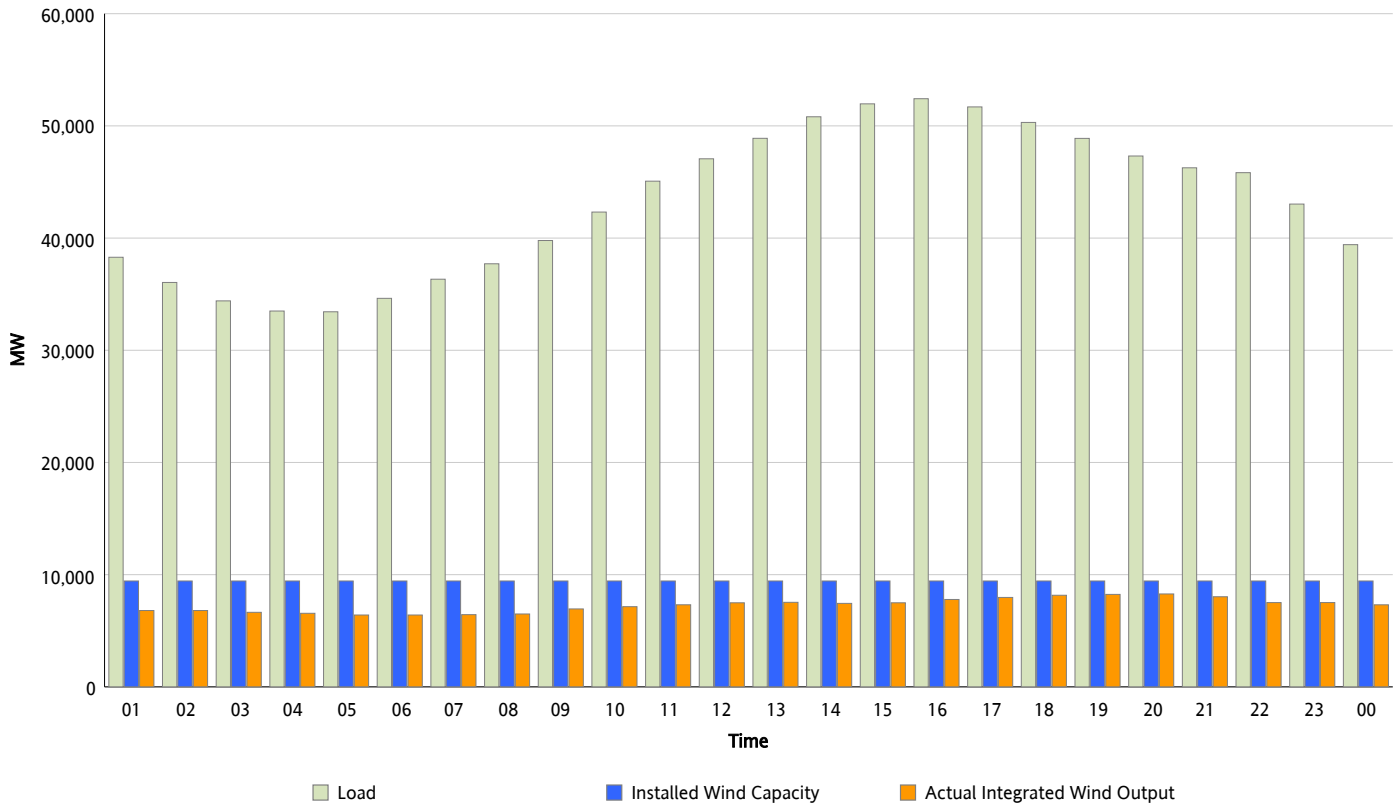




## ERCOT Grid Operations Wind Integration Report : 06/19/2012

Peak Load	<b>52,423 MW</b>
Load Peak Hour (HE)	<b>16</b>
Wind Over Peak	<b>7,790 MW</b>
Wind Record 06/19/12	<b>8,368 MW</b>
Max Wind Value*	<b>8,368 MW</b>
Wind Peak Time	<b>19:25</b>
Wind Integration %	<b>17.64 %</b>

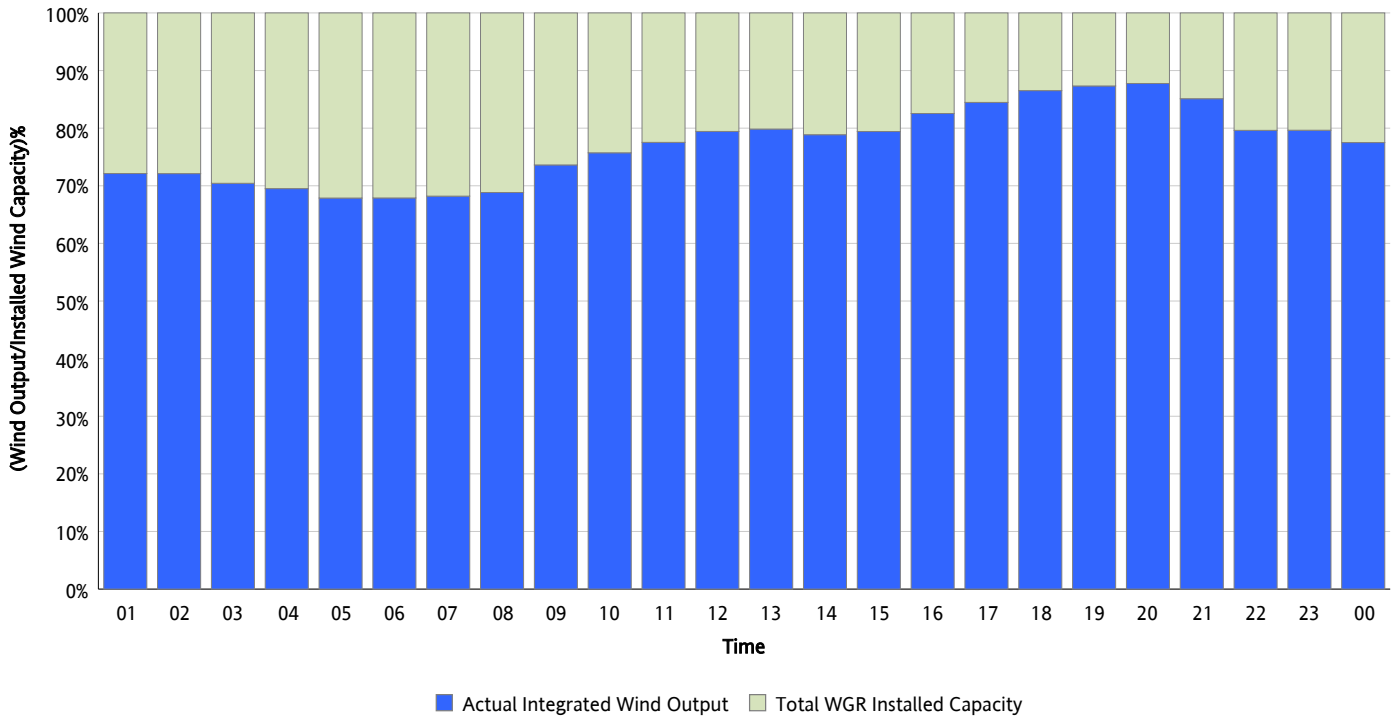
**Hourly Average Actual Load vs. Actual Wind Output  
06/19/2012**



*\* Wind Record and Wind Max represent instantaneous values and the rest of the values are integrated over the hour*

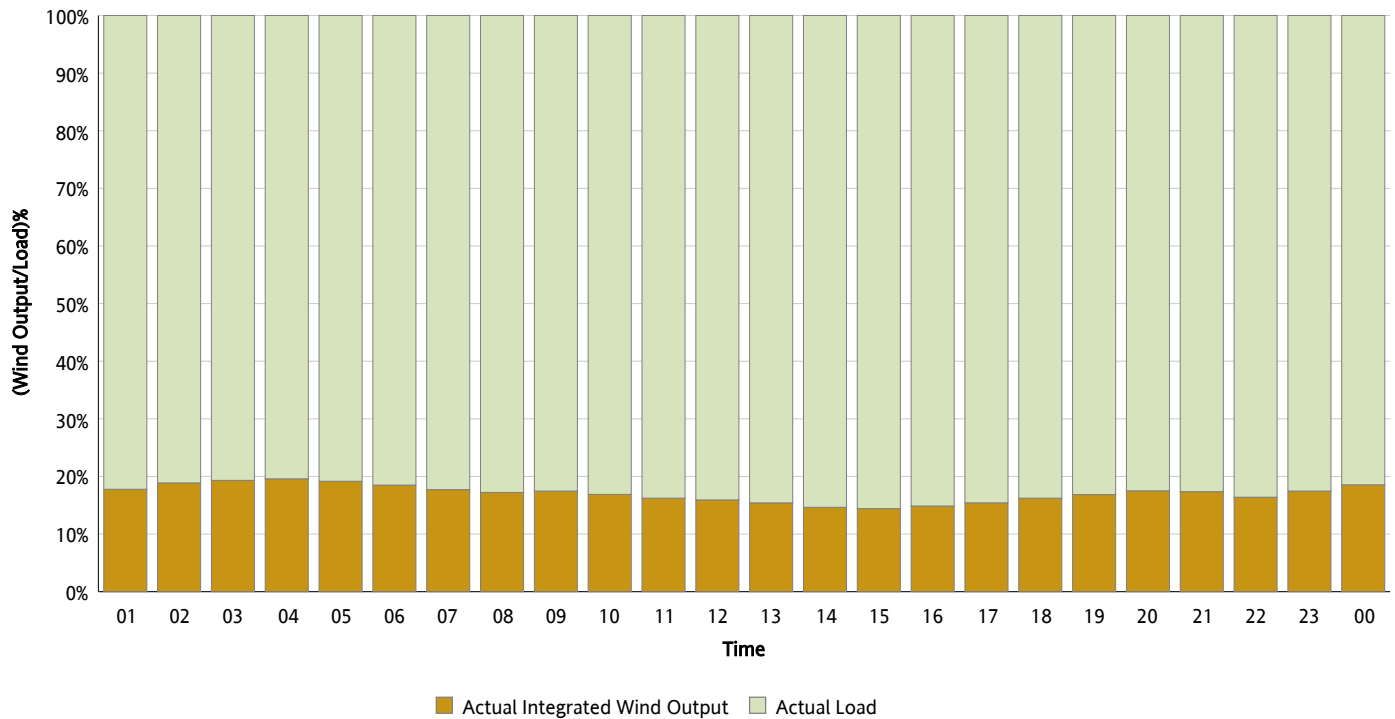
Actual Wind Output as a Percentage of the Total Installed Wind Capacity

06/19/2012



Actual Wind Output as a Percentage of the ERCOT Load

06/19/2012



ERCOT Load vs. Actual Wind Output

06/12/2012 - 06/19/2012

