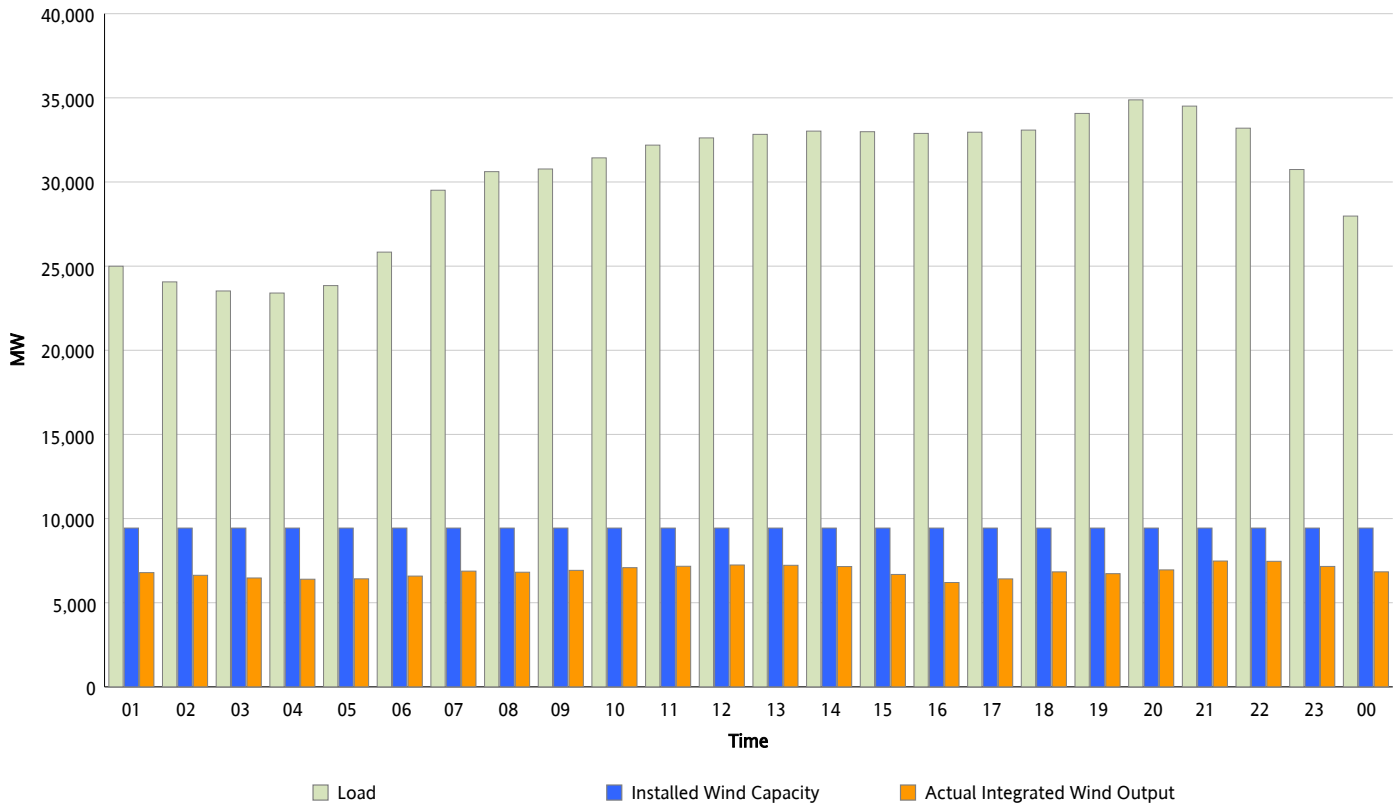




ERCOT Grid Operations Wind Integration Report : 03/07/2012

Peak Load	34,880 MW
Load Peak Hour (HE)	20
Wind Over Peak	6,951 MW
Wind Record 03/07/12	7,599 MW
Max Wind Value*	7,599 MW
Wind Peak Time	20:41
Wind Integration %	22.08 %

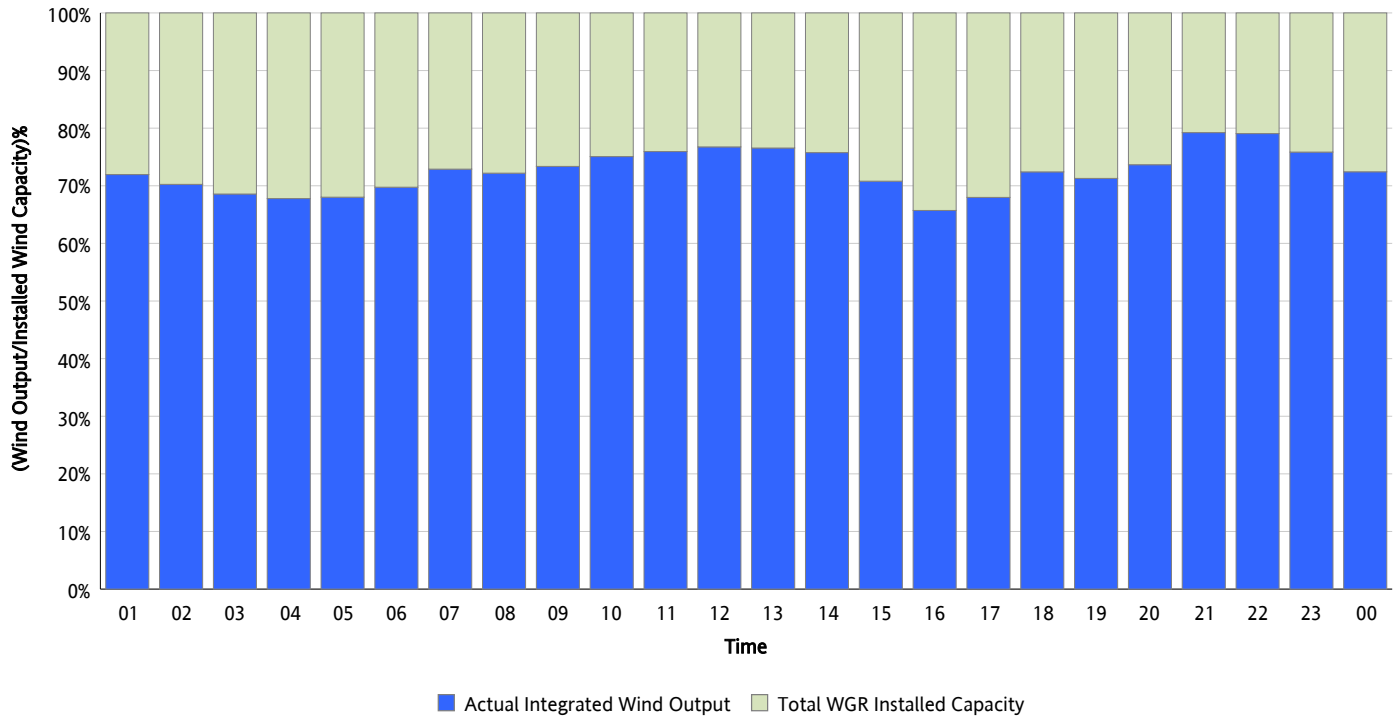
**Hourly Average Actual Load vs. Actual Wind Output
03/07/2012**



** Wind Record and Wind Max represent instantaneous values and the rest of the values are integrated over the hour*

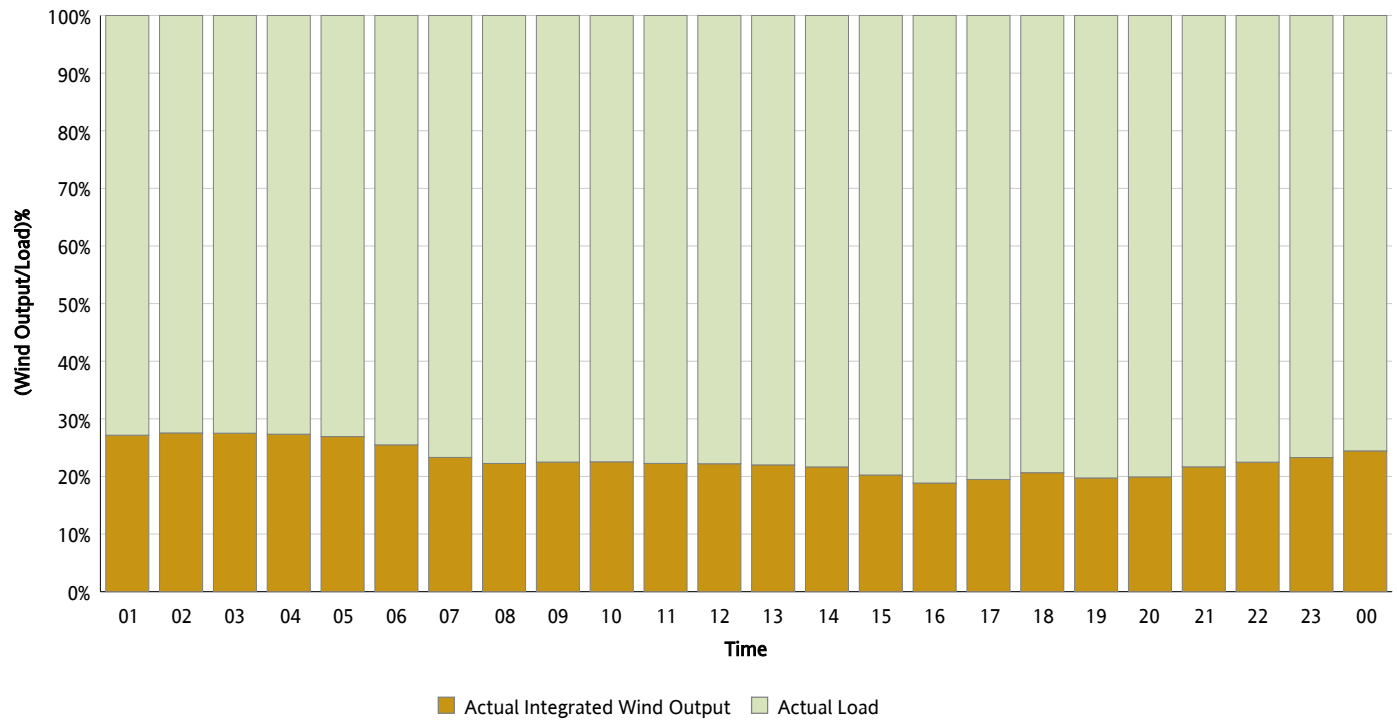
Actual Wind Output as a Percentage of the Total Installed Wind Capacity

03/07/2012



Actual Wind Output as a Percentage of the ERCOT Load

03/07/2012



ERCOT Load vs. Actual Wind Output

02/29/2012 - 03/07/2012

